



 **cameo**<sup>®</sup>  
colours of light

# PRODUCT **CATALOGUE** 2015

TABLE OF **CONTENT**

LED **MOVING HEADS** ..... **06**

LED **SCANNERS** ..... **14**

LED STANDARD **PAR CANS** ..... **18**

LED FLAT **PAR CANS** ..... **38**

LED STUDIO **PAR CANS** ..... **50**

LED OUTDOOR **CANS** ..... **68**

LED **SETS** ..... **78**

LED **BARS** ..... **86**

COB LED **STROBES** ..... **104**

LED LIGHT **EFFECTS** ..... **108**

**FLUIDS** ..... **120**

**ACCESSORIES** ..... **122**







always on the  
**move.**



In just a short time, **Cameo®** has developed into a leading brand for professional lighting equipment. Our portfolio includes over 100 innovative LED lighting products and accessories for a wide variety of applications – ranging from small clubs to complex rigs at major events.

2015 is full of plans and ideas for the development and production of sophisticated new products. Using state of the art technology as well as energy-efficient and long-lasting LED technology, we are working hard to implement the ideas and requirements of our users.

We look forward to receiving your feedback and wish you a lot of fun with the **Cameo®** 2015 catalogue!

Your **Cameo®** Team



In wenigen Jahren hat sich **Cameo®** zu einer bedeutenden Marke für professionelles Lichtequipment entwickelt. Unser Portfolio umfasst derzeit über 100 innovative LED-Lichtprodukte und Accessoires für die unterschiedlichsten Anwendungen – von kleinen Clubs bis hin zu komplexen Riggs auf Großveranstaltungen.

Auch das Jahr 2015 ist voller Pläne und Ideen für die Weiterentwicklung und Herstellung ausgereifter Produktneuheiten. Unter dem Einsatz modernster Technologie sowie energieeffizienter und langlebiger LED-Technik, ist es unser Ziel, die Ideen und Anforderungen unserer Nutzer umzusetzen.

Wir freuen uns auf Ihr Feedback und wünschen viel Spaß mit dem **Cameo®** Katalog 2015!

Ihr **Cameo®** Team



En pocos años, **Cameo®** se ha convertido en una empresa destacada en el sector de equipos profesionales de iluminación. Nuestro catálogo de productos incluye actualmente más de 100 innovadores productos y accesorios de iluminación LED para una amplia gama de aplicaciones, desde pequeños clubes hasta complejas instalaciones en grandes escenarios.

El año 2015 también viene repleto de planes e ideas para desarrollar y fabricar nuevos productos avanzados. Mediante el uso de la tecnología más avanzada y de la iluminación LED energéticamente eficiente y duradera, tenemos como objetivo llevar a la práctica las ideas y demandas de nuestros usuarios.

Estaremos encantados de recibir sus sugerencias y esperamos que disfrute con nuestro catálogo de **Cameo®** 2015.

El equipo de **Cameo®**



En quelques années seulement, **Cameo®** est devenue l'une des marques les plus appréciées dans le domaine des éclairages scéniques professionnels. Notre catalogue offre aujourd'hui plus de 100 produits à LED innovants, ainsi que leurs accessoires, pour répondre aux applications les plus variées – des petits clubs aux installations ou concerts les plus complexes.

Nous travaillons sur une multitude de projets et d'idées pour l'année 2015, qui verra le développement et la présentation de nombreuses nouveautés. En utilisant les technologies les plus modernes dont la technologie LED, synonyme d'efficacité énergétique et de durée de vie élevée, notre but est de créer les produits imaginés et réclamés par nos utilisateurs.

N'hésitez pas à nous faire part de vos remarques, idées ou besoins! Nous espérons que vous apprécierez notre Catalogue **Cameo®** 2015!

Votre équipe **Cameo®**

[www.cameolight.com](http://www.cameolight.com)

Cameo® is a brand of the Adam Hall Group.



[www.facebook.com/cameolightandsound](http://www.facebook.com/cameolightandsound)  
[www.youtube.com/cameolightandsound](http://www.youtube.com/cameolightandsound)  
[blog.adamhall.com](http://blog.adamhall.com)





- ▶ 7 high power 15 W Quad LEDs
- ▶ RGBW spectrum for saturated primary colours, subtle pastel shades and natural shades of white
- ▶ Single Pixel Control for effective Pixel Mapping effects
- ▶ 2 high-speed engines for precise, high-speed and unlimited Pan and Tilt movements
- ▶ Effective automated operating modes
- ▶ Programmable Standalone scenes
- ▶ Professional 3- and 5-pin DMX sockets and Neutrik powerCon mains connector
- ▶ With a 3,600 Hz refresh rate, it is ideal for TV and video applications
- ▶ RDM enabled
- ▶ 4 selectable dimming curves
- ▶ Colour temperature correction
- ▶ 3 temperatures of white: warm white, white, cool white



WATCH THE DEMO-VIDEO:



## AUROBEAM 150

### 7 X 15 W RGBW LED UNLIMITED MOVING HEAD

The Cameo AUroBeam 150 is an ultra-fast moving head with unlimited Pan and Tilt movement, 16-bit resolution and a 3,600 Hz refresh rate. Seven 15 Watt Quad RGBW LEDs produce rich colours, fresh pastel colours and vibrant shades of white with a 12° beam angle and a light intensity of 50,000 lux; the Single Pixel Control ensures impressive Pixel Mapping effects. The professional features of the AUroBeam 150 include a low noise temperature controlled fan, powerCON mains connectors from Neutrik and 3- and 5-pin inputs and outputs for the DMX signal. It can be operated fully automatically with programmable scenes or music, or used in standalone, master or slave mode; when using DMX, 5-channel, 11-channel, 19-channel and 41-channel control modes are available, featuring among others dimmer and strobe functions.

Model Name:	CLABEAM150
Product Type:	LED Moving Light
Type:	Moving Head
Colour Range:	RGBW
Number of LEDs:	7
LED Type:	15W
Refresh Rate:	3,600 Hz
Dispersion:	12°
DMX Input:	XLR 3-pin male, XLR 5-pin male
DMX Output:	XLR 3-pin female, XLR 5-pin female
DMX Mode:	11-channel, 5-channel, 19-channel, 41-channel
DMX Functions:	Strobe, Single Pixel Control, Pan/Tilt Fine, Pan/Tilt, Dimmer
PAN Movement:	unlimited
TILT Movement:	unlimited
High Speed Strobe:	>30 Hz
Standalone Modes:	Auto Run, Sound Control, Show
Controls:	Mode, Enter, Value Up, Value Down, +, -
Indicators:	Colour LC Display
Power Supply	100 V AC - 240 V AC, 50 - 60 Hz
Power Consumption	130W
Power Connector:	Neutrik powerCON IN/OUT
Housing Material:	ABS/Metal
Housing Colour:	Black
Type of Cooling:	silent, Temperature controlled Fan
Illuminance:	50,000 lx @ 1m
Dimensions (without mounting bracket):	375 x 260 x 180 mm





# MOVING HEAD 60 W

## LED MOVING HEAD RGB 60 W

The Cameo CLMHRGB60W is a moving head powered by an energy-efficient ultra high luminosity 60-Watt white LED. It allows for DMX control in 8 and 13-channel modes and standalone operation with automated programs and sound activation to the beat of the music. An LED display and Mode, Enter, Value Up and Value Down keys provide easy manual control. The unit features seven 21 mm gobos plus an open spot and 9 deeply saturated colours. With 540° pan and 270° tilt capabilities and dimmer, shutter, focus control, prism and high speed strobe functions the CLMHRGB60W is a versatile tool for creative lighting design and stunning effects.

- ▶ 60 W Ultra High Power CREE LED
- ▶ 8 brilliant colours
- ▶ 7 different gobos
- ▶ Fast 540° pan and 270° tilt capability
- ▶ Operated via DMX, in master/slave mode or standalone mode
- ▶ Integrated microphone for sound control
- ▶ Simple to operate using the four buttons and LED display



WATCH THE DEMO-VIDEO:



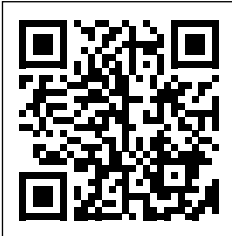
Model Name:	CLMHRGB60W
Product Type:	LED Moving Light
Type:	Moving Head
Colour Range:	8 Channel Multi Colour + white
Number of LEDs:	1
LED Type:	60W
Number of Gobos:	7 + open
Gobo Size:	21 mm
DMX Input:	XLR 3-pin
DMX Output:	XLR 3-pin
DMX Mode:	8/13-channel
DMX Functions:	PAN, TILT, Colour Wheel, Gobo Wheel, Shutter, Dimmer, Program, focus control, prism
PAN Movement:	within 540°
TILT Movement:	within 270°
High Speed Strobe:	>30 Hz
Standalone Modes:	Auto Run, Sound Control, Show
Controls:	Mode, Enter, Value Up, Value Down
Indicators:	LED Display
Power Supply	230 V AC
Power Consumption	100W
Power Connector:	IECC Euro Power Socket male
Housing Material:	ABS / Metal
Housing Colour:	Black
Type of Cooling:	Fan
Illuminance:	40,000 lx @ 1m
Dimensions (without mounting bracket):	230 x 275 x 320 mm



- ▶ Bar with 4 ultra-fast moving heads
- ▶ Each moving head can be controlled individually
- ▶ Powerful 10 W Cree RGBW Quad LEDs
- ▶ Universal mounting options
- ▶ 2 Omega brackets and a removable tripod flange included
- ▶ 16 effective automated operating modes
- ▶ Simple operation using the four buttons and LED display



WATCH THE DEMO-VIDEO:



## HYDRABEAM 400 RGBW

### BAR WITH 4 ULTRA-FAST 10W CREE RGBW QUAD LED MOVING HEAD

The Cameo HydraBeam 400 RGBW is a bar with 4 ultra-fast moving heads that can be controlled independently. They are equipped with high-intensity, 10 W Quad LEDs made by the leading manufacturer Cree, providing a narrow 11° beam angle. The moving heads swivel by up to 540° horizontally and by up to 270° vertically, and are cooled by an extremely low-noise fan. The HydraBeam 400 can be controlled in the DMX modes with 6-channel, 10-channel, 19-channel and 32-channel, and be can used as a master, slave or standalone. The built-in microphone allows an external sound control. 16 automated programmes provide lively movement patterns; the strobe function will produce up to 30 flashes per second.

Model Name:	CLHB400RGBW
Product Type:	LED Moving Light
Type:	Moving Head
Colour Spectrum:	RGBW
Number of LEDs:	4
LED Type:	10W Cree
Dispersion:	11°
DMX Input:	XLR 3-pin male
DMX Output:	XLR 3-pin female
DMX Mode:	6-channel, 32-channel, 19-channel, 10-channel
DMX Functions:	Dimmer, PAN, TILT, Strobe, Colour Change
PAN Movement:	540°
TILT Movement:	270°
High Speed Strobe:	>30 Hz
Standalone Modes:	Auto Run, Sound Control
Controls:	Mode, Enter, Value Up, Value Down
Indicators:	LED Display
Operating Voltage:	100 V AC - 240 V AC, 50 - 60 Hz
Power Consumption	100 W
Power Connector:	IEC Power Connector male
Housing Material:	Metal / ABS Plastic /
Housing Colour:	Black
Type of Cooling:	Low-noise Fan
Illuminance:	green 19,000 lx @ 1m, red 10,670 lx @ 1m, white 27,600 lx @ 1m, blue 3,710 lx @ 1m
Dimensions (without mounting bracket):	810 x 250 x 130 mm

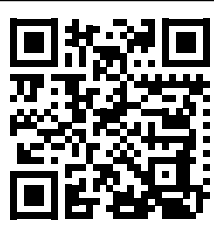




- ▶ 4 ultra-fast and individually controllable moving heads
- ▶ Powerful ultra-bright 10 W LUMIEngin LEDs
- ▶ Universal mounting options
- ▶ 2 Omega brackets and a removable tripod flange included
- ▶ 16 effective automated operating modes
- ▶ Simple operation using the four buttons and LED display



WATCH THE DEMO-VIDEO:



## HYDRABEAM 400 W

### BAR WITH 4 ULTRA-FAST 10 W LUMI-ENGIN LED MOVING HEAD

The Cameo HydraBeam 400 White is a bar with 4 ultra-fast moving heads that can be controlled independently. They are equipped with high-intensity, white, 10 W Lumi-Engin LEDs, providing a narrow 11° beam angle and 84,000 lux of light intensity. The moving heads swivel by up to 540° horizontally and by up to 270° vertically, and are cooled by an extremely low-noise fan. The HydraBeam 400 can be controlled in the DMX modes with 6-channel, 10-channel, 15-channel and 28-channel, and be can used as a master, slave or standalone. The built-in microphone allows an external sound control. 16 automated programmes provide lively movement patterns; the strobe function will produce up to 30 flashes per second.

Model Name:	CLHB400W
Product Type:	LED Moving Light
Type:	Moving Head
Colour Range:	White
Number of LEDs:	4
LED Type:	10W
Dispersion:	11°
DMX Input:	XLR 3-pin male
DMX Output:	XLR 3-pin female
DMX Mode:	15-channel, 10-channel, 6-channel, 28-channel
DMX Functions:	PAN, TILT, Strobe, Dimmer, Colour Change
PAN Movement:	540°
TILT Movement:	270°
High Speed Strobe:	>30 Hz
Standalone Modes:	Auto Run, Sound Control
Controls:	Mode, Enter, Value Up, Value Down
Indicators:	LED Display
Operating Voltage:	100 V AC - 240 V AC, 50 - 60 Hz
Power Consumption	100W
Power Connector:	IEC Power Connector male
Housing Material:	ABS / Metal
Housing Colour:	Black
Type of Cooling:	Low-noise Fan
Illuminance:	84,000 lx @ 1m
Dimensions (without mounting bracket):	810 x 250 x 130 mm



## GOBO **SCANNER** 60 W

### LED GOBO SCANNER LIGHTING 60 W

The Cameo CLSCAN60W is a feature-packed LED scanner with rotatable prism and motorized focus for crisp and detailed gobo projection. It uses a powerful 60-Watt white LED by industry leader Cree for intense luminosity, long life and low power consumption. The CLSCAN60W is capable of 10-channel mode DMX, master, slave and standalone operation including automated programs and sound activation to the beat of the music. With a selection of 9 saturated colours, 7 gobos plus open spot, 180° pan and 90° tilt the Cameo CLSCAN60W allows for highly flexible lighting design and prism effects enhanced by the high speed strobe, dimming and shutter functions.

- ▶ 60 W Ultra High Power CREE LED
- ▶ 8 brilliant colours
- ▶ 7 different gobos
- ▶ Operated via DMX, in master/slave mode or standalone mode
- ▶ Integrated microphone for sound control
- ▶ Simple to operate using the four buttons and LED display
- ▶ Universal mounting bracket included
- ▶ Compact, sturdy metal housing



WATCH THE DEMO-VIDEO:



Model Name:	CLSCAN60W
Product Type:	LED Moving Light
Type:	Scanner
Colour Range:	8 Channel Multi Colour + white
Number of LEDs:	1
LED Type:	60 W
Number of Gobos:	7 + open
DMX Input:	XLR 3-pin
DMX Output:	XLR 3-pin
DMX Mode:	10-channel
DMX Functions:	PAN, TILT, Colour Wheel, Gobo Wheel, Shutter, Dimmer, Program, Focus control, Prism
PAN Movement:	within 180°
TILT Movement:	within 90°
High Speed Strobe:	> 30 Hz
Standalone Modes:	Auto Run, Sound Control
Controls:	Mode, Enter, Value Up, Value Down
Indicators:	LED Display
Power Supply	230 V AC
Power Consumption	90 W
Power Connector:	IECC Euro Power Socket male
Housing Material:	Metal
Housing Colour:	Black
Type of Cooling:	Fan
Illuminance:	26,000 lx @ 1m
Dimensions (without mounting bracket):	204 x 150 x 475 mm





## GOBO **SCANNER** 25 W

### LED GOBO SCANNER LIGHTING 25 W

The key features of the CLSCAN25 are an ultra-bright 25-Watt LED engine, a colour wheel with eight dichroic colours and a gobo wheel with eleven gobos. With a pan of 180 degrees and a tilt of 90 degrees, the sharply focused light beam in this compact scanner effortlessly reaches every corner of the room. Although the power consumption is a mere 50 Watts, the CLSCAN25 makes a real impression with its high output and brilliant colours. It is actuated either via DMX protocol (3-pin XLR) with seven control channels, in master/slave mode or in standalone mode via the sound control. The CLSCAN25 is operated using four push buttons and an LED display in the scanner head.

- ▶ 25 W Ultra High Power CREE LED
- ▶ 8 brilliant colours
- ▶ 11 different gobos
- ▶ Operated via DMX, in master/slave mode or standalone mode
- ▶ Integrated microphone for sound control
- ▶ Simple to operate using the four buttons and LED display
- ▶ Universal mounting bracket included
- ▶ Compact, sturdy metal housing



WATCH THE DEMO-VIDEO:



Model Name:	CLSCAN25W
Product Type:	LED Moving Light
Type:	Scanner
Colour Range:	8-channel Multi Colour
Number of LEDs:	1
LED Type:	25 W
Number of Gobos:	11 + open
DMX Input:	XLR 3-pin
DMX Output:	XLR 3-pin
DMX Mode:	7-channel
DMX Functions:	PAN, TILT, Colour Wheel, Gobo Wheel, Shutter, Dimmer, Program
PAN Movement:	within 180°
TILT Movement:	within 90°
Standalone Modes:	Auto Run, Sound Control
Controls:	Mode, Enter, Value Up, Value Down
Indicators:	LED Display
Operating voltage:	100 V AC - 240 V AC, 50 - 60 Hz
Power Consumption:	50 W
Power Connector:	IECC Euro Power Socket male
Housing Material:	Metal
Housing Colour:	Black
Type of Cooling:	Fan
Illuminance:	4,000 lx @ 1 m
Dimensions (without mounting bracket):	204 x 150 x 465 mm



## PAR 64 CAN RGBWA+UV

12 X 10 W **LED PAR CAN** RGBAW+UV IN POLISHED OR BLACK HOUSING

The Cameo CLP64RGBWAU10WPS/BS is a professional PAR 64 light with 25° beam angle and 3,000 Hz refresh rate for flicker-free performance. Available in polished or black aluminium it is equipped with 12 ultra bright 10 watt 6-in-1 LEDs. Their RGBWA+UV spectrum enables rich and highly flexible colour mixing. The high performance CLP64RGBWAU10WPS/BS features 2-channel, 3-channel 1, 3-channel 2, 6-channel and 9-channel DMX modes and sound control. With numerous functions and integrated programs it also provides master, slave and standalone use. The illuminated LC-display and mode, enter, up and down controls facilitate operation. The CLP64RGBWAU10WPS/BS comes with adjustable twin brackets for variable mounting and a fixed power cord with grounding Safety plug. It can be powered from any 110 - 250 V AC source.

Model Name:	CLP64RGBWAU10WPS (polished housing) / CLP64RGBWAU10WBS (black housing)
Product Type:	LED Par Can
Type:	PAR 64
Colour Range:	RGBWA + UV
Number of LEDs:	12
LED Type:	10 W 6in1 Colour
Beam Angle:	25°
DMX Input:	XLR 3-pin
DMX Output:	XLR 3-pin
DMX Mode:	2-channel, 3-channel 1, 3-channel 2, 6-channel, 9-channel
DMX Functions:	Colour Fade, Colour Jump, Master Dimmer, RGBWA+UV, Sound Control, Strobe
Standalone Modes:	Colour Jump, Colour Fade, Slave Mode, Sound Control, Static Colour, Colour Macro
Controls:	Mode, Value Down, Value Up, Enter
Indicators:	illuminated LC-Display
Power Connector:	Power Cord with Safety Plug (Type E / CEE 7/7)
Housing Material:	Aluminium
Housing Colour:	Polished / Black
Type of cooling:	Fan
Illuminance:	16,000 lx @ 1m
Dimensions (without mounting bracket):	260 x 280 x 300 mm

- ▶ 12 x 10 W Ultra High Power 6in1 RGBAW+UV LEDs
- ▶ Highest flexibility for perfect mixing of solid and pastel colours to warm rich colours and ultra violet
- ▶ Flicker Free
- ▶ Operated via DMX, in master/slave mode or standalone mode
- ▶ Integrated microphone for sound control
- ▶ Simple to operate using the four buttons and LED display
- ▶ Double brackets included as standard
- ▶ Rugged compact aluminum housing



WATCH THE DEMO-VIDEO:







## PAR 64 CAN Q 8W

18 X 8W **QUAD COLOUR LED PAR CAN** RGBW  
IN POLISHED OR BLACK HOUSING

An extremely powerful LED-PAR in a black or polished housing. The Cameo CLP64Q8WBS/PS has a total of 18 quad LEDs (RGBW) and thus guarantees perfect mixing of solid and pastel colours – including white. With a power consumption of just 170 Watts, the 8-Watt Quad LEDs produce an impressive level of brightness with a beam angle of 25 degrees. It is quick and easy to operate using four buttons and an LED display on the back. The CLP64Q8WBS/PS is equipped with a super-quiet fan for cooling. The dual bracket permits simple use as a floor PAR. There are three operating modes. In addition to DMX operation with 2, 3, 4 or 7 channels, this LED PAR can also be operated in standalone mode or via sound control. It features an integrated microphone.

- ▶ 18 x 8 W Ultra High Power QUAD RGBW LEDs
- ▶ RGBW for perfect mixing of solid and pastel colours
- ▶ Operated via DMX, in master/slave mode or standalone mode
- ▶ Integrated microphone for sound control
- ▶ Simple to operate using the four buttons and LED display
- ▶ Double brackets included as standard
- ▶ Rugged compact aluminum housing



WATCH THE DEMO-VIDEO:



Model Name:	CLP64Q8WPS (polished housing) / CLP64Q8WBS (black housing)
Product Type:	LED Par Can
Type:	PAR 64
Colour Range:	RGBW
Number of LEDs:	18
LED Type:	8 W QUAD Colour
Beam Angle:	25°
DMX Input:	XLR 3-pin male
DMX Output:	XLR 3-pin female
DMX Mode:	2/3/4/7-channel selectable
DMX Functions:	RGBW, Master Dimmer, Strobe, Sound Control, Colour Jump, Colour Fade
Standalone Modes:	Static Colour, Colour Fading, Colour Jump, Sound Control, Slave
Controls:	Enter, Mode, Value Up, Value Down
Indicators:	LED Display
Power Connector:	Power Cord with Safety Plug (Type E / CEE 7/7)
Housing Material:	Aluminium
Housing Colour:	Polished / Black
Type of cooling:	Fan
Illuminance:	20,900 lx @ 1m
Dimensions (without mounting bracket):	260 x 270 x 305 mm



## PAR 56 CAN Q 8W

### 9 X 8W **QUAD COLOUR LED RGBW** PAR LIGHT

IN POLISHED OR BLACK HOUSING

The Cameo CLP56Q8WPS is a professional PAR56 projector in classic matt black aluminium housing with 9 extremely bright, 8 W powerful RGBW LEDs. The energy-efficient, long-life Quad-colour light-emitting diodes produce rich colours and subtle pastel tones with an illuminance of 12,200 lux and a 25° beam angle. The CLP56Q8WPS can be controlled in the DMX-modes with 2-channel, 3-channel 1, 3-channel 2, 4-channel and 7-channel and be used as a master, slave or standalone. It is easily operated via a clear LED display and buttons for mode, input, up and down, a built-in microphone allows the PAR can to be controlled through music. 3-pin XLR-sockets are used as DMX input and output control in series. The Cameo CLP56Q8WPS is effectively cooled by a large, smooth-running low-speed fan. It can be operated universally with mains voltages from 100 to 240 volts; the power consumption is a low 75 W.

Model Name:	CLP56Q8WPS (polished housing) / CLP56Q8WBS (black housing)
Product Type:	LED Par Can
Type:	PAR 56
Colour Range:	RGBW
Number of LEDs:	9
LED Type:	8 W QUAD Colour
Beam Angle:	25°
DMX Input:	XLR 3-pin male
DMX Output:	XLR 3-pin female
DMX Mode:	3-channel 2, 7-channel, 3-channel 1, 4-channel, 2-channel
DMX Functions:	Colour Fade, Strobe, Colour Macro, Master Dimmer, RGBW, Sound Control, Colour Jump
Standalone Modes:	Slave Mode, Colour Macro, Colour Jump, Colour Fade, Sound Control, Static Colour
Controls:	Enter, Mode, Value Up, Value Down
Indicators:	LED Display
Operating Voltage:	100 V AC - 240 V AC, 50 - 60 Hz
Power Consumption:	75 W
Power Connector:	Power cord with Safety plug (Type E / CEE 7/7)
Housing Material:	Aluminium
Housing Colour:	Polished / Black
Type of Cooling:	Large Low-Speed Fan
Illuminance:	12,200 lx @ 1m
Dimensions (without mounting bracket):	235 x 240 x 260 mm

- ▶ 9 x 8 W Ultra High Power QUAD RGBW LEDs
- ▶ RGBW for perfect vibrant and pastel colours
- ▶ Operation via DMX, in Master/Slave mode or as a single projector
- ▶ Built-in microphone for sound-control mode
- ▶ Simple to operate using the four buttons and LED display
- ▶ Double mounting bracket included in the delivery
- ▶ Rugged, compact aluminium housing



WATCH THE DEMO-VIDEO:







## PAR 64 CAN TRI 3 W

18 X 3 W **TRI COLOUR LED PAR CAN** RGB IN POLISHED OR BLACK HOUSING

Ultra-high performance LED PAR 64 with 18 ultra-bright 3-Watt TRI colour LEDs in a black or polished housing. This high-performance LED PAR has a beam angle of 25 degrees and a power consumption of just 60 Watts. Like all new LED PAR cans, the CLP64TRI3WBS/PS features a sturdy housing. The double bracket makes this PAR can the ideal lamp for use as a floor PAR or for mounting to cross-beams and bars. It is actuated either via the DMX protocol (3-pin XLR) with six control channels, in master/slave mode or standalone mode (sound control, colour change, static colours). It features an integrated microphone and is quick and easy to operate using four buttons and an LED display.

- ▶ 18 x 3 W High Power TRI RGB LEDs
- ▶ Low power consumption
- ▶ Operated via DMX, in master/slave mode or standalone mode
- ▶ Integrated microphone for sound control
- ▶ Simple to operate using the four buttons and LED display
- ▶ Double brackets included as standard
- ▶ Rugged compact aluminum housing



WATCH THE DEMO-VIDEO:



Model Name:	CLP64TRI3WPS (polished housing) / CLP64TRI3WBS (black housing)
Product Type:	LED Par Can
Type:	PAR 64
Colour Range:	RGB
Number of LEDs:	18
LED Type:	3W TRI Colour
Beam Angle:	25°
DMX Input:	XLR 3-pin
DMX Output:	XLR 3-pin
DMX Mode:	6-channel
DMX Functions:	RGB, Master Dimmer, Strobe, Sound Control, Colour Jump, Colour Fade
Standalone Modes:	Static Colour, Colour Change, Colour Fading, Sound Control, Slave
Controls:	Mode, Enter, Value Up, Value Down
Indicators:	LED Display
Power Connector:	Power cord with Safety plug (Type E / CEE 7/7)
Housing Material:	Aluminium
Housing Colour:	Polished / Black
Type of cooling:	Fan
Illuminance:	11,300 lx @ 1m
Dimensions (without mounting bracket):	260 x 280 x 300 mm



## PAR 64 CAN RGB 3W

36X3W **LED PAR CAN** RGB IN POLISHED OR BLACK HOUSING

Extremely high-powered LED PAR in a black, short housing. Equipped with dual brackets and a filter frame holder. The Cameo CLP64RGB3WBS/PS has a total of 36 ultra-bright 3-Watt LEDs (12 x red, 12 x green, 12 x blue) – for perfect colour mixing and rich solid colours. The beam angle is 30 degrees. It is operated using three buttons and an LED display on the back. The CLP64RGB3WBS/PS is equipped with a super-quiet fan for cooling. There are three operating modes. In addition to DMX operation with 2, 3, 4 or 6 channels, this LED PAR can also be operated in standalone mode or via sound control. It has a built-in microphone. The CLP64RGB3WBS/PS has a power consumption of just 150 watts, runs on mains voltages of 100 to 250 volts, and thus can be used universally and worldwide.

- ▶ 36 x 3 W Ultra High Power RGB LEDs
- ▶ Low power consumption
- ▶ Operated via DMX, in master/slave mode or standalone mode
- ▶ Integrated microphone for sound control
- ▶ Simple to operate using the three buttons and LED display
- ▶ Double brackets included as standard
- ▶ Rugged compact aluminum housing

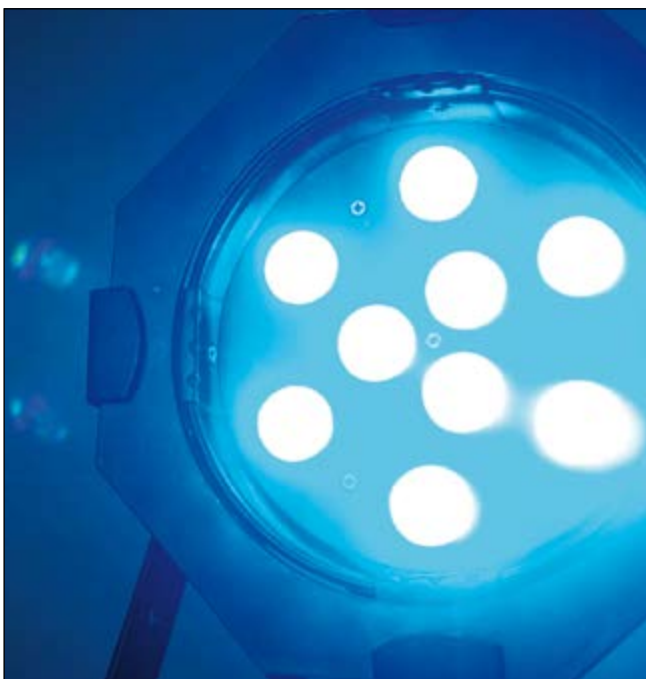


WATCH THE DEMO-VIDEO:



Model Name:	CLP64RGB3WPS (polished housing) / CLP64RGB3WBS (black housing)
Product Type:	LED Par Can
Type:	PAR 64
Colour Range:	RGB
Number of LEDs:	36
LED Type:	3 W
Beam Angle:	30°
DMX Input:	XLR 3-pin male
DMX Output:	XLR 3-pin female
DMX Mode:	4 / 6-channel selectable
DMX Functions:	RGB, Master Dimmer, Strobe, Sound Control, Colour Jump, Colour Fade
Standalone Modes:	Static Colour, Colour Fading, Colour Jump, Sound Control, Slave
Controls:	Mode, Value Up, Value Down
Indicators:	LED Display
Power Connector:	Power cord with Safety plug (Type E / CEE 7/7)
Housing Material:	Aluminium
Housing Colour:	Polished / Black
Type of cooling:	Fan
Illuminance:	19,500 lx @ 1m
Dimensions (without mounting bracket):	260 x 270 x 305 mm





## PAR 56 CAN TRI RGB 3W

9X3 W **TRI COLOUR LED PAR CAN** RGB  
IN POLISHED OR BLACK HOUSING

Ultra-high performance LED PAR 56 with 9 extremely bright 3-Watt TRI colour LEDs in a black or polished housing. This high-performance LED PAR has a beam angle of 25 degrees and a power consumption of just 40 Watts. Like all new LED PAR cans, the CLP56TRI3WBS/PS features a sturdy housing. The double bracket makes this PAR can the ideal lamp for use as a floor PAR or for mounting to cross-beams and bars. It is actuated either via the DMX protocol (3-pin XLR) with six control channels, in master/slave or standalone mode (sound control, colour change, solid colours). It features an integrated microphone and is quick and easy to operate using four buttons and an LED display.

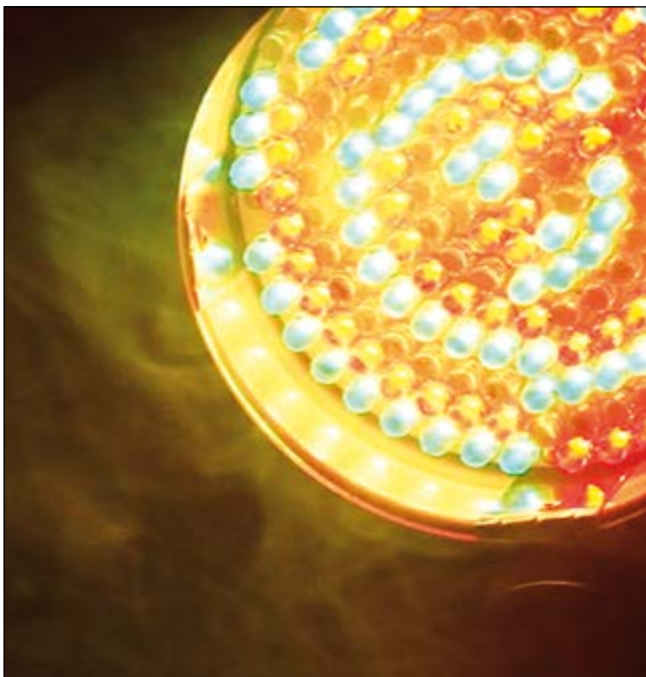
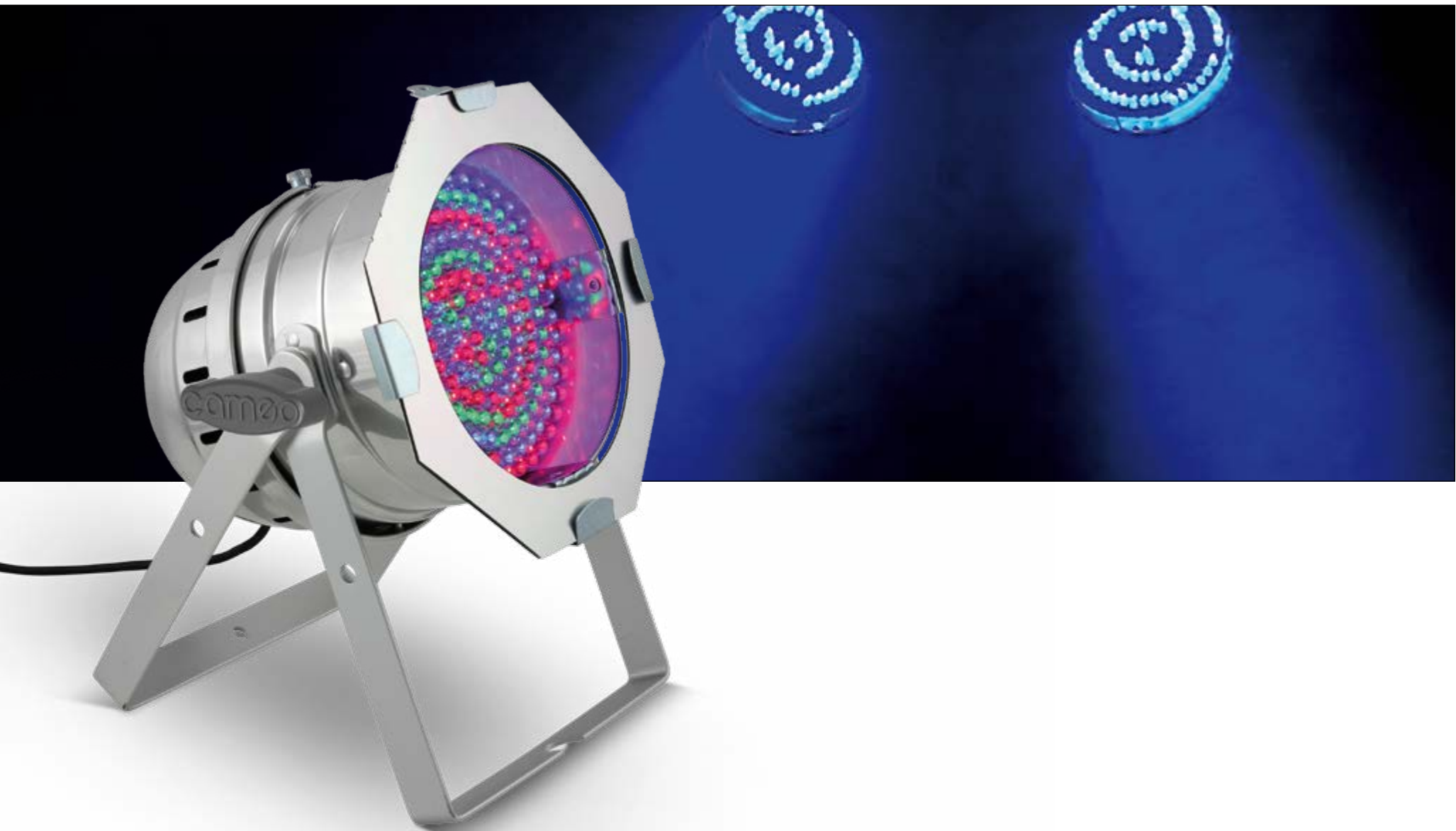
- ▶ 9 x 3 W High Power RGB TRI LEDs
- ▶ Low power consumption
- ▶ Operated via DMX, in master/slave mode or standalone mode
- ▶ Integrated microphone for sound control
- ▶ Simple to operate using the four buttons and LED display
- ▶ Double brackets included as standard
- ▶ Rugged compact aluminum housing



WATCH THE DEMO-VIDEO:



Model Name:	CLP56TRI3WPS (polishes housing) / CLP56TRI3WBS (black housing)
Product Type:	LED Par Can
Type:	PAR 56
Colour Range:	RGB
Number of LEDs:	9
LED Type:	3 W TRI Colour
Beam Angle:	25°
DMX Input:	XLR 3-pin
DMX Output:	XLR 3-pin
DMX Mode:	6-channel
DMX Functions:	RGB, Master Dimmer, Strobe, Colour Jump, Colour Fade
Standalone Modes:	Static Colour, Colour Change, Colour Fading, Sound Control, Slave
Controls:	Mode, Enter, Value Up, Value Down
Indicators:	LED Display
Power Connector:	Power cord with Safety plug (Type E / CEE 7/7)
Housing Material:	Aluminium
Housing Colour:	Polished / Black
Type of cooling:	Convection
Illuminance:	7,400 lx @ 1m
Dimensions (without mounting bracket):	230 x 250 x 260 mm

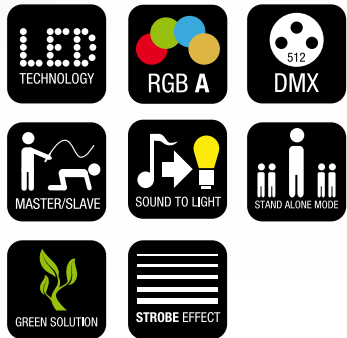


## PAR 64 CAN RGB 10

177 X 10MM **LED PAR CAN** RGB IN POLISHED OR BLACK HOUSING

The Cameo CLP64RGBA10BS/PS is a professional PAR 64 spotlight in a traditional aluminium housing with 177 bright, long-lasting 10mm LEDs in the colours red, green, blue, and amber (RGBA system). Two adjustable brackets with knurled locking screws permit use as a floor spot and mounting on traverses, walls, and ceilings. The beam angle is 25°. The CLP64RGBA10BS/PS can be controlled in 7-channel DMX mode or in standalone mode, in each case with six functions. It is operated using buttons for mode, enter, up, and down. A 4-position LED display indicates the corresponding setting. XLR sockets serve as DMX in- and outputs for controlling several spotlights in series. Additional advantages are a low power consumption of just 30-Watt and minimal generation of heat. The spotlight is available in black or polished.

- ▶ Powerful 177 x 10 mm RGBA LEDs
- ▶ RGBA for warm, rich colour mixing
- ▶ Operated via DMX, in master/slave mode or standalone mode
- ▶ Integrated microphone for sound control
- ▶ Simple to operate using the four buttons and LED display
- ▶ Double brackets included as standard
- ▶ Rugged compact aluminum housing

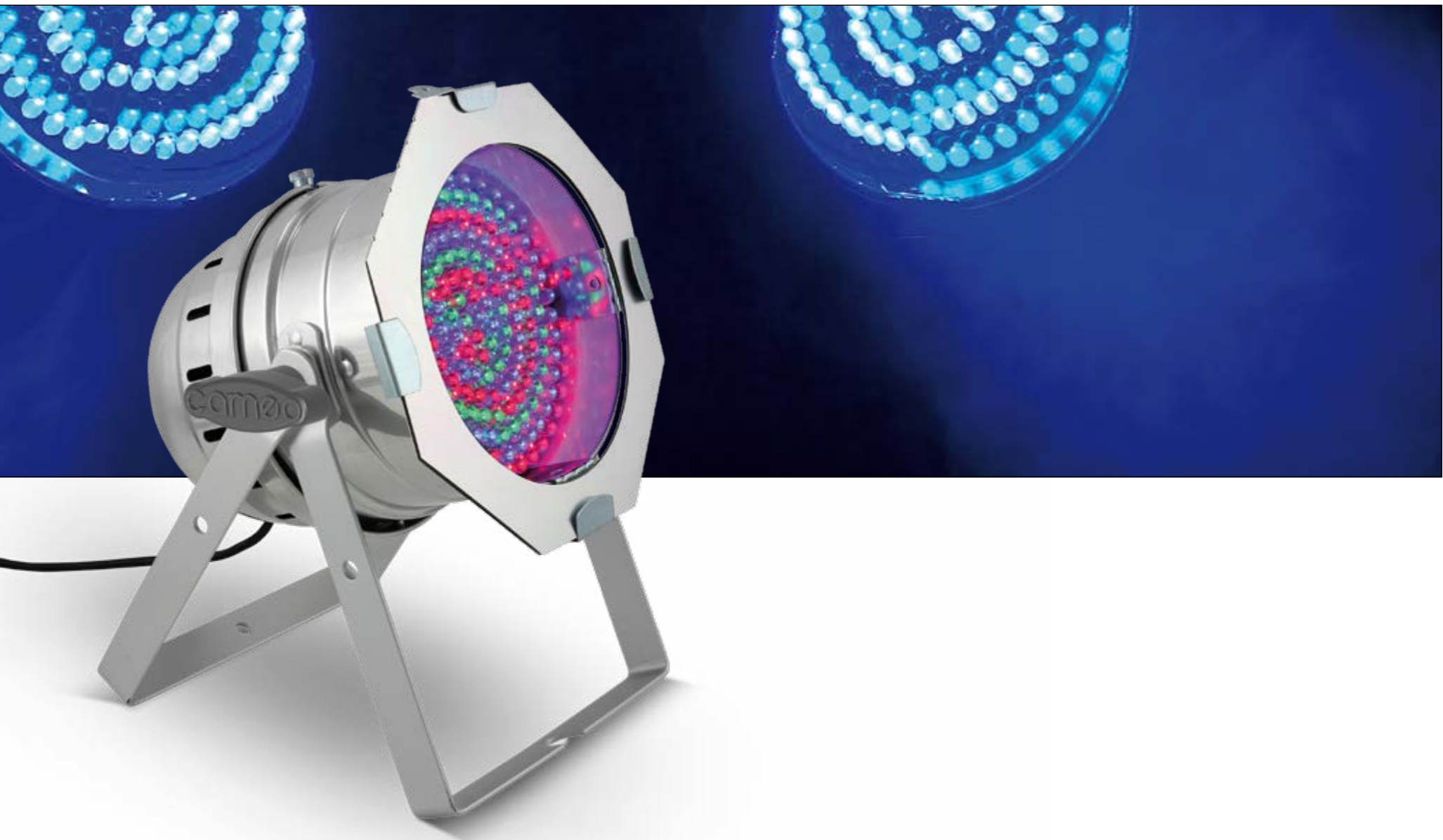


WATCH THE DEMO-VIDEO:



Model Name:	CLP64RGBA10PS (polished housing) / CLP64RGBA10BS (black housing)
Product Type:	LED Par Can
Type:	PAR 64
Colour Range:	RGBA
Number of LEDs:	177
LED Type:	10 mm
Beam Angle:	25°
DMX Input:	XLR 3-pin male
DMX Output:	XLR 3-pin female
DMX Mode:	7-channel
DMX Functions:	RGBA, Master Dimmer, Strobe, Colour Jump, Colour Fade
Standalone Modes:	Static Colour, Colour Change, Colour Fading, Sound Control, Slave Mode
Controls:	Mode, Enter, Value Up, Value Down
Indicators:	LED Display
Power Connector:	Power Cord with Safety Plug (Type E / CEE 7/7)
Housing Material:	Aluminium
Housing Colour:	Polished / Black
Type of cooling:	Convection
Illuminance:	2,600 lx @ 1m
Dimensions (without mounting bracket):	265 x 270 x 280 mm





## PAR 64 CAN RGB 10

183 X 10 MM **LED PAR CAN** RGB IN POLISHED OR BLACK HOUSING

Professional PAR can with 183 ultra-bright 10-mm LEDs in the RGB colour system (60 x red, 60 x green, 63 x blue) in a conventional sturdy aluminium housing and with a beam angle of 25 degrees. Featuring a double bracket, the CLP64RGB10BS/PS PAR is suitable for use both as a floor PAR and for mounting to cross-beams and bars. Actuation is either via the DMX protocol (3-pin XLR) with four or six control channels, in master/slave mode or standalone mode (sound control, colour change, solid colours). It is controlled by three buttons and an LED display. Its power consumption is a mere 30 Watts.

- ▶ Powerful 183 x 10 mm RGB LEDs
- ▶ Low power consumption
- ▶ Operated via DMX, in master/slave mode or standalone mode
- ▶ Integrated microphone for sound control
- ▶ Simple to operate using the three buttons and LED display
- ▶ Double brackets included as standard
- ▶ Rugged compact aluminum housing



WATCH THE DEMO-VIDEO:



Model Name:	CLP64RGB10PS (polished housing) / CLP64RGB10BS (black housing)
Product Type:	LED Par Can
Type:	PAR 64
Colour Range:	RGB
Number of LEDs:	183
LED Type:	10 mm
Beam Angle:	25°
DMX Input:	XLR 3-pin male
DMX Output:	XLR 3-pin female
DMX Mode:	4 / 6-channel selectable
DMX Functions:	RGB, Master Dimmer, Strobe, Sound Control, Colour Jump, Colour Fade
Standalone Modes:	Static Colour, Colour Change, Colour Fading, Sound Control, Slave
Controls:	Mode, Value Up, Value Down
Indicators:	LED Display
Power Connector:	Power Cord with Safety Plug (Type E / CEE 7/7)
Housing Material:	Aluminium
Housing Colour:	Polished / Black
Type of cooling:	Convection
Illuminance:	2,050 lx @ 1m
Dimensions (without mounting bracket):	265 x 270 x 280 mm



## PAR 56 CAN RGB 10 MM

108 X 10 MM **LED PAR CAN** RGB IN POLISHED OR BLACK HOUSING

Professional PAR can with 108 ultra-bright LEDs (36 x red, 36 x green, 36 x blue) and RGB colour system in a sturdy aluminium housing and a beam angle of 25 degrees. Featuring a double bracket, the CLP56RGB10PS/BS is suitable for use both as a floor PAR and for mounting to cross-beams and bars. It is actuated either via DMX protocol (3-pin XLR) with three and six control channels, in master/slave mode or in standalone mode (sound control, colour change, solid colours). It is controlled by three buttons and an LED display. The power consumption of the CLP56RGB10PS/BS is a mere 20 Watts.

- ▶ 108 powerful 10mm RGB LEDs
- ▶ Low power consumption
- ▶ Operated via DMX, in master/slave mode or standalone mode
- ▶ Integrated microphone for sound control
- ▶ Simple to operate using the three buttons and LED display
- ▶ Double brackets included as standard
- ▶ Rugged compact aluminum housing

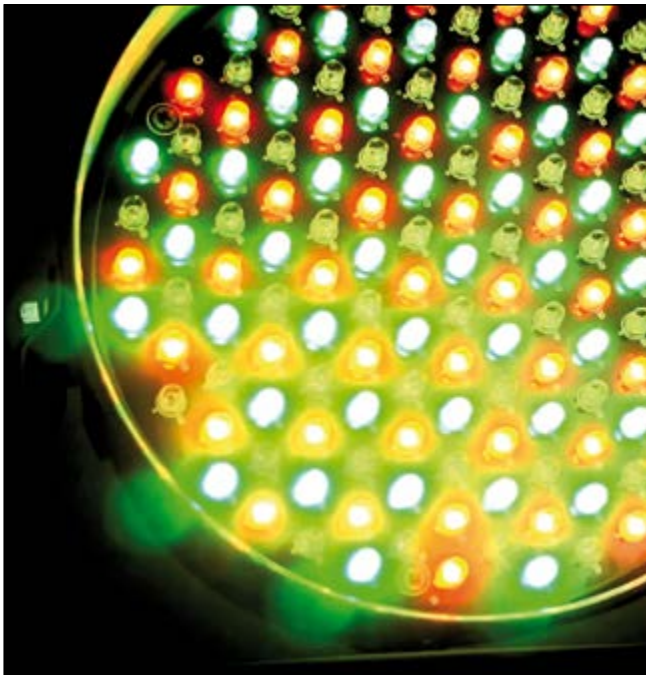
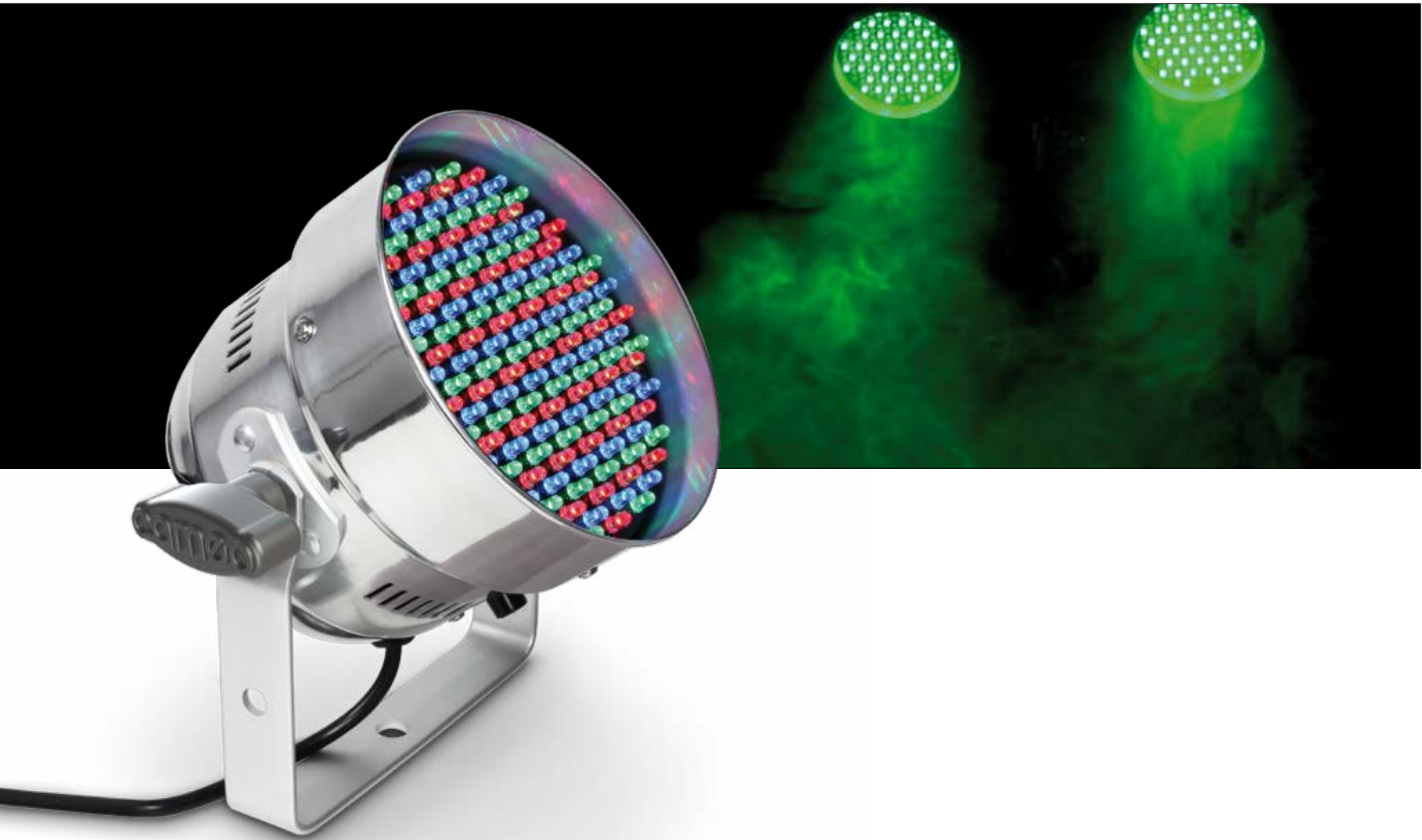


WATCH THE DEMO-VIDEO:



Model Name:	CLP56RGB10PS (polished housing) / CLP56RGB10BS (black housing)
Product Type:	LED Par Can
Type:	PAR 56
Colour Range:	RGB
Number of LEDs:	108
LED Type:	10 mm
Beam Angle:	25°
DMX Input:	XLR 3-pin male
DMX Output:	XLR 3-pin female
DMX Mode:	4 / 6-channel selectable
DMX Functions:	RGB, Master Dimmer, Strobe, Sound Control, Colour Jump, Colour Fade
Standalone Modes:	Static Colour, Colour Change, Colour Fading, Sound Control, Slave
Controls:	Mode, Value Up, Value Down
Indicators:	LED Display
Power Connector:	Power Cord with Safety Plug (Type E / CEE 7/7)
Housing Material:	Aluminium
Housing Colour:	Polished / Black
Type of cooling:	Convection
Illuminance:	1,220 lx @ 1m
Dimensions (without mounting bracket):	230 x 250 x 260 mm





**PAR 56 CAN** RGB 5 MM  
151 X 5 MM **LED PAR CAN** RGB IN POLISHED  
OR BLACK HOUSING

The CLP56RGB05PS/BS is a traditional PAR 56 can that's high-tech on the inside. 151 ultra-bright LEDs (51 x red, 49 x green, 51 x blue) create an optimal colour mix and awe-inspiring lighting. The CLP56RGB05PS/BS has a beam angle of 25 degrees and at just 23-Watt, its power consumption is at least ten times lower than that of conventional PAR cans. The CLP56RGB05PS/BS has three operating modes DMX (with four or six control channels), standalone (steady light, colour gradient) or music-controlled (via an integrated microphone). All settings can be configured quickly and easily using the three buttons and the LED on the back.

- ▶ 151 powerful RGB LEDs
- ▶ Low power consumption
- ▶ Operated via DMX, in master/slave mode or standalone mode
- ▶ Integrated microphone for sound control
- ▶ Simple to operate using the three buttons and LED display
- ▶ Rugged compact aluminum housing

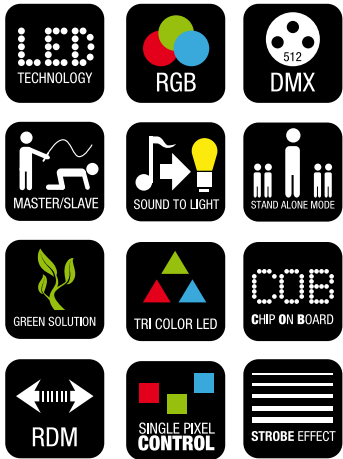


Model Name:	CLP56RGB05PS (polished housing) / CLP56RGB05BS (black housing)
Product Type:	LED Par Can
Type:	PAR 56
Colour Range:	RGB
Number of LEDs:	151
LED Type:	5 mm
Beam Angle:	25°
DMX Input:	XLR 3-pin male
DMX Output:	XLR 3-pin female
DMX Mode:	4 / 6-channel selectable
DMX Functions:	RGB, Master Dimmer, Strobe, Sound Control, Colour Jump, Colour Fade
Standalone Modes:	Static Colour, Colour Change, Colour Fading, Sound Control, Slave
Controls:	Mode, Value Up, Value Down
Indicators:	LED Display
Power Connector:	Power Cord with Safety Plug (Type E / CEE 7/7)
Housing Material:	Aluminium
Housing Colour:	Polished / Black
Type of cooling:	Convection
Illuminance:	900 lx @ 1m
Dimensions (without mounting bracket):	170 x 170 x 169 mm





- ▶ Ultra bright 30 W RGB LEDs
- ▶ COB LED technology for seamless colour blends
- ▶ Flicker free
- ▶ LED single pixel control for pixel-mapping effects
- ▶ Absolutely silent operation due to efficient convection cooling
- ▶ Professional connection options with Neutrik PowerCon inputs/outputs as well as 3-pin and 5-pin DMX input and output sockets
- ▶ Rugged, flat and compact metal housing
- ▶ RDM enabled
- ▶ 4 selectable dimming curves
- ▶ Colour temperature correction
- ▶ 3 temperatures of white: warm white, white, cool white



WATCH THE DEMO-VIDEO:



## FLAT PRO SPOTIX 7

### 7 X 30 W **COB LED TRI COLOUR SPOT PAR LIGHT** IN BLACK HOUSING

The Cameo Flat Pro Spotix 7 is a compact, flat PAR light with RGB colour mixing for demanding professional use. Seven long-lasting, 30 watt strong COB LEDs generate seamless colour blends with a beam angle of 30° and 7000 lux illuminance. The Single Pixel Control provides pixel-mapping effects for brilliant, eye-catching lighting. The Cameo Spotix 7 can be controlled in the DMX modes with 2-channel, 3-channel 1, 3-channel 2, 9-channel 27-channel. The built-in microphone allows an external sound control. The projector is equipped with numerous programs and diverse functions and can be used as master, slave and standalone. A backlit display and the Enter, Value Up, Value Down and Mode buttons are used for simple, intuitive operation. The Cameo Flat Pro Spotix 7 operates with highly efficient convection cooling and is thus absolutely noiseless; it works on all mains voltages from 100 to 240 volts.

Model Name:	CLFLATPROSP7
Product Type:	LED Par Can
Type:	Flat PAR COB
Colour Range:	RGB
Number of LEDs:	7
LED Type:	30W COB
Refresh Rate:	3,600 HZ
Dispersion:	30 °
DMX Input:	XLR 3-pin male, XLR 5-pin male
DMX Output:	XLR 3-pin female, XLR 5-pin female
DMX Mode:	27-channel, 3-channel 2, 9-channel, 3-channel 1, 2-channel
DMX Functions:	Colour Jump, Colour Fade, Strobe, Master Dimmer, Sound Control, Single Pixel Control
Standalone Modes:	Colour Jump, Colour Fade, Static Colour, Sound Control, Slave Mode, Colour Macro
Controls:	Mode, Enter, Value Up, Value Down
Indicators:	Backlit LC-Display
Operating Voltage:	110V AC - 240V AC / 50 - 60 Hz
Power Consumption:	250W
Power Connector:	Neutrik PowerCon
Housing Material:	Metal
Housing Colour:	Black
Type of cooling:	Convection
Illuminance:	7,000 lx @ 1m
Dimensions (without mounting bracket):	280 x 280 x 140 mm

**Other Features:**  
1 m power cable with Neutrik PowerCon and safety plug included, multifunctional mounting bracket!





## FLAT PRO SPOTIX 4

4 X 30 W **COB LED TRI COLOUR SPOT PAR LIGHT**  
IN BLACK HOUSING

The Cameo Flat Pro Spotix 4 is a compact, flat PAR light with RGB colour mixing for demanding professional use. Four long-lasting, 30 watt strong COB LEDs generate seamless colour blends with a beam angle of 30° and 3800 lux illuminance. The Single Pixel Control provides pixel-mapping effects for brilliant, eye-catching lighting. The Cameo Spotix 4 can be controlled in the DMX modes with 2-channel, 3-channel 1, 3-channel 2, 9-channel and 18-channel. The built-in microphone allows an external sound control. The projector is equipped with numerous programs and diverse functions and can be used as master, slave and standalone. A backlit display and the Enter, Value Up, Value Down and Mode buttons are used for simple, intuitive operation. The Cameo Flat Pro Spotix 4 operates with highly efficient convection cooling and is thus absolutely noiseless; it works on all mains voltages from 100 to 240 volts.

Model Name:	CLFLATPROSP4
Product Type:	LED Par Can
Type:	Flat PAR COB
Colour Range:	RGB
Number of LEDs:	4
LED Type:	30W COB
Refresh Rate:	3,600 HZ
Dispersion:	30 °
DMX Input:	XLR 3-pin male, XLR 5-pin male
DMX Output:	XLR 3-pin female, XLR 5-pin female
DMX Mode:	3-channel 1, 2-channel, 18-channel, 12-channel, 9-channel, 3-channel 2
DMX Functions:	Colour Jump, Colour Fade, Strobe, Master Dimmer, Sound Control, Single Pixel Control
Standalone Modes:	Colour Jump, Colour Fade, Static Colour, Sound Control, Slave Mode, Colour Macro
Controls:	Mode, Enter, Value Up, Value Down
Indicators:	Backlit LC-Display
Operating Voltage:	110V AC - 240V AC / 50 - 60 Hz
Power Consumption:	150W
Power Connector:	Neutrik PowerCon
Housing Material:	Metal
Housing Colour:	Black
Type of cooling:	Convection
Illuminance:	3,800 lx @ 1m
Dimensions (without mounting bracket):	230 x 230 x 140 mm

**Other Features:**  
1 m power cable with Neutrik PowerCon and safety plug included, multifunctional mounting bracket!

- ▶ Ultra bright 30 W RGB LEDs
- ▶ COB LED technology for seamless colour blends
- ▶ Flicker free
- ▶ LED single pixel control for pixel-mapping effects
- ▶ Absolutely silent operation due to efficient convection cooling
- ▶ Professional connection options with Neutrik PowerCon inputs/outputs as well as 3-pin and 5-pin DMX input and output sockets
- ▶ Rugged, flat and compact metal housing
- ▶ RDM enabled
- ▶ 4 selectable dimming curves
- ▶ Colour temperature correction
- ▶ 3 temperatures of white: warm white, white, cool white



WATCH THE DEMO-VIDEO:





CLPFLATPRO18

CLPFLATPRO12

CLPFLATPRO7

- ▶ High performance thanks to ultra bright 10W LEDs
- ▶ Super silent due to convection cooling
- ▶ RGBWA colour spectrum for more flexible colour mixing reaching from warm, rich to solid and pastel colours
- ▶ Flicker free
- ▶ Professional connectivity with Neutrik PowerCon in/out and 3 and 5-pol DMX IN and Outputs
- ▶ Rugged flat and compact metal housing



WATCH THE DEMO-VIDEO:



## LED FLAT PAR CANS



## FLAT PRO SERIES INDOOR 10 W LED PAR CAN RGBWA IN BLACK HOUSING

With their RGBWA spectrum the Cameo FLAT PRO SERIES professional PAR lights support stunning, highly creative lighting design. High performance ultra bright 10 watt LEDs produce a huge range of colours from soft pastel hues to rich, warm tints with a 30° beam angle while the FLAT PRO lights' 3.000 Hz refresh rate eliminates flicker. Designed for indoor use the CLPFLATPRO7, CLPFLATPRO12 and CLPFLATPRO18 vary in their dimensions and number of LEDs only. They feature 5 DMX modes with numerous functions, integrated programs and a built-in microphone for sound control. Incorporating a illuminated LC-display with 4 controls for easy manual operation the CLPFLATPRO7, CLPFLATPRO12 and CLPFLATPRO18 also provide master, slave and standalone capability. With black die-cast enclosures and convection cooling the FLAT PRO SERIES PAR lights are super silent. They include both 3-pin and 5-pin XLR inputs and outputs for the DMX signal and Neutrik PowerCon sockets for mains supply and daisy-chaining. The multifunctional bracket design offers a wide variety of mounting options.

Model Name:	CLPFLATPRO18 / CLPFLATPRO12 / CLPFLATPRO7
Product Type:	LED Par Can
Type:	Flat PAR
Colour Range:	RGBWA
Number of LEDs:	18 / 12 / 7
LED Type:	10W
Beam Angle:	30°
DMX Input:	XLR 3-pin, XLR 5-pin
DMX Output:	XLR 3-pin, XLR 5-pin
DMX Mode:	2-channel, 3-channel-1, 3-channel-2, 5-channel, 8-channel
DMX Functions:	Colour Jump, Colour Fade, Strobe, Master Dimmer, RGBWA, Sound Control
Standalone Modes:	Colour Jump, Colour Fade, Static Colour, Sound Control, Slave Mode, Colour Macro
Controls:	Mode, Enter, Value Up, Value Down
Indicators:	illuminated LC-Display
Power Connector:	Neutrik PowerCon in/out
Housing Material:	Metal
Housing Colour:	Black
Type of cooling:	Convection
Illuminance:	28,000 lx @ 1m / 16,000 lx @ 1m / 12,000 lx @ 1m
Dimensions (without mounting bracket):	280 x 280 x 130 mm / 230 x 230 x 135 mm / 180 x 180 x 133 mm





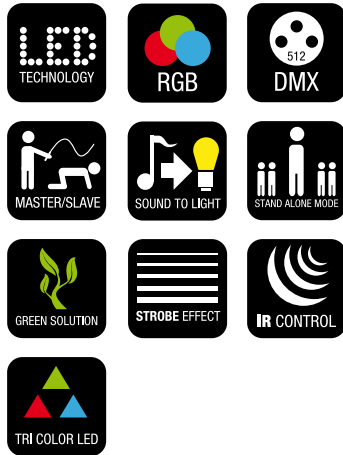
Optional  
IR remote control

CLPFLAT1REMOTE

WATCH THE DEMO-VIDEO:



- ▶ With IR-remote control capability
- ▶ Low power consumption
- ▶ Power in / out for daisy chaining up to 10 units
- ▶ Operated via DMX, in master/slave mode or standalone mode or optional IR-remote
- ▶ Integrated microphone for sound control
- ▶ Simple to operate using the four buttons and LED display
- ▶ Double brackets included as standard
- ▶ Flat and compact ABS housing



## LED FLAT PAR CANS



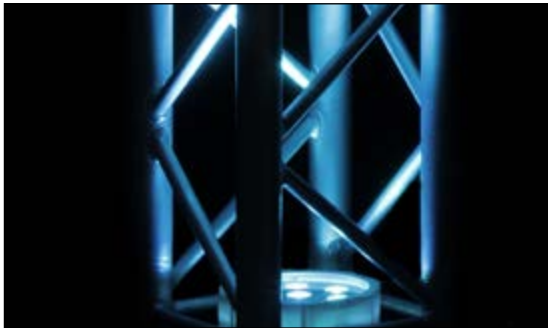
Also available:

Set including 4 units  
+ 1 remote control

CLPFLAT1TRI3WIRSET1 /  
CLPFLAT1TRI3WIRWHSET1



Also available in white.



## FLAT PAR CAN TRI 3W IR

### 7 X 3W TRI COLOUR LED PAR CAN RGB IN BLACK OR WHITE HOUSING

The Cameo CLPFLAT1TRI3WIR is a very flat, luminous PAR projector with seven 3 watt high power TRI LEDs, RGB colour spectrum, a 30° beam angle, rich features and lighting effects. It works completely silently. Thanks to minimal heat generation, no fan is required.

The CLPFLAT1TRI3WIR can be operated via an infrared remote control, 4 DMX modes, the integrated display with control buttons for Menu, Enter, Up and Down or external sound sources and as a master, slave and standalone.

Model Name:	CLPFLAT1TRI3WIR (black housing) / CLPFLAT1TRI3WIRWH (white housing)
Product Type:	LED PAR Can
Type:	FLAT PAR
Colour Range:	RGB
Number of LEDs:	7
LED Type:	3W TRI Colour
Dispersion:	30°
DMX Input:	XLR 3-pin male
DMX Output:	XLR 3-pin female
DMX Mode:	3-channel 2, 3-channel 1, 2-channel, 6-channel
DMX Functions:	Strobe, Colour Jump, Sound Control, RGB, Colour Fade, Master Dimmer
Standalone Modes:	Slave Mode, Sound Control, Static Colour, Colour Fade, Colour Jump, Colour Macro
Controls:	Mode, Enter, Value Up, Value Down
Indicators:	LED-Display
Power Supply	100 V AC - 240 V AC, 50 - 60 Hz
Power Consumption	25 W
Power Connector:	IEC power connector male, IEC power connector female
Housing Material:	ABS plastic
Housing Colour:	Black, White
Illuminance:	4,100 lx @ 1m
Dimensions:	180 x 175 x 115 mm



Optional  
IR remote control

**CLPFLAT1REMOTE**

WATCH THE DEMO-VIDEO:



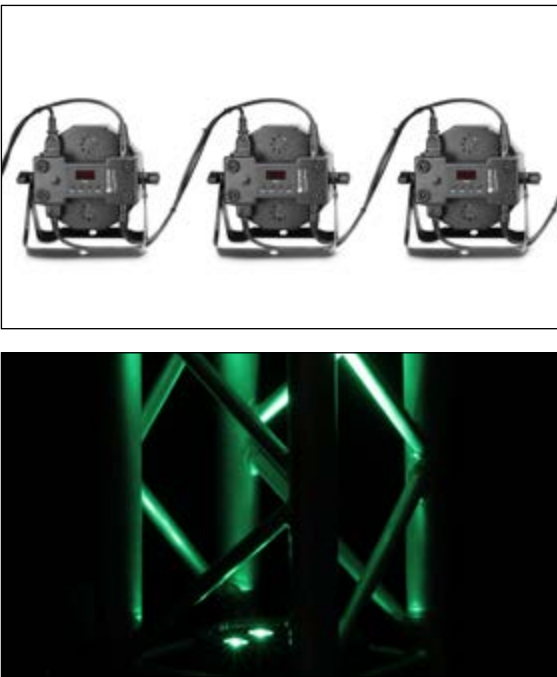
- ▶ With IR remote control option
- ▶ Low power consumption
- ▶ Current input and output connectors for daisy-chaining up to 10 devices
- ▶ Operation by DMX, master/slave mode, as a single projector or via the optional IR remote control
- ▶ Built-in microphone for sound-control mode
- ▶ Simple to operate using the four buttons and LED display
- ▶ Double mounting bracket included in the delivery
- ▶ Flat, compact ABS housing



**Also available:**

Set including 4 units  
+ 1 remote control

**CLPFLAT1TRI5X3WSET1**



## FLAT PAR CAN TRI 5X3W IR FLAT PAR PROJECTOR WITH 5 X 3 W HIGH POWER TRI COLOUR RGB LEDS IN BLACK HOUSING

The Cameo CLPFLAT1TRI5X3WIR is a flat PAR projector with 5 brilliant 3 Watt TRI colour LEDs for RGB colour mixing, with a 30° beam angle and an intensity of 3,850 Lux. RGB colour spectrum. Due to its minimal heat emission, it doesn't need a fan and works absolutely noiselessly. The CLPFLAT1TRI5X3WIR can be flexibly controlled via an optional infrared remote control, 4 DMX modes and a bright display with buttons for Menu, Enter, Up and Down. It can be operated as a master, slave and standalone with multiple functions and is equipped with a microphone for music control. The compact black plastic ABS housing has XLR connectors for input and forwarding of the DMX signal; IEC connectors are used to connect to mains and output. Thus, a maximum of 10 projectors can be connected in series; an adjustable double bracket offers variable mounting options. The Cameo CLPFLAT1TRI5X3WIR is also attractive due to its low power consumption of only 20 watts.

Model Name:	CLPFLAT1TRI5X3WIR
Product Type:	LED Par Can
Type:	Flat PAR
Colour Range:	RGB
Number of LEDs:	5
LED Type:	3W TRI Colour
Dispersion:	30°
DMX Input:	XLR 3-pin male
DMX Output:	XLR 3-pin female
DMX Mode:	6-channel, 3-channel 2, 3-channel 1, 2-channel
DMX Functions:	Sound Control, RGB, Colour Jump, Master Dimmer, Colour Fade, Strobe
Standalone Modes:	Static Colour, Sound Control, Slave Mode, Colour Jump, Colour Fade
Controls:	Mode, Value Down, Value Up, Enter
Display:	LED Display
Operationg Voltage:	110VAC - 240VAC / 50 - 60 Hz
Power Consumption:	20W
Power Connector:	IEC power connector male, IEC power connector female
Housing Material:	ABS plastic
Housing Colour:	Black
Type of Cooling:	Convection
Illuminance:	3,850 lx @ 1m
Dimensions (without mounting bracket):	180 x 175 x 115 mm





Optional  
IR remote control

**CLPFLAT1REMOTE**

- ▶ Extremely bright Spotlight in a flat and lightweight ABS housing
- ▶ Optional IR-Remote available (CLPFLAT1REMOTE)
- ▶ Very low power consumption
- ▶ Power in / out for daisy chaining up to 10 units



WATCH THE DEMO-VIDEO:



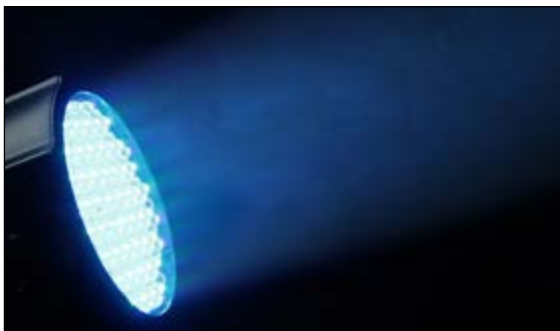
## LED FLAT **PAR CANS**



**Also available:**

Set including 4 units  
+ 1 remote control

**CLPFLAT1RGB10IRSET1 /  
CLPFLAT1RGB10IRWHSET1**



## FLAT PAR CAN RGB 144 X 10 MM **FLAT LED RGB PAR** SPOT LIGHT IN BLACK OR WHITE HOUSING

The Cameo CLPFLAT1RGB10IR is a flat and lightweight PAR light with RGB colours and 14° beam angle providing a variety of functions and lighting effects. A total of 144 large extremely powerful 10 mm LEDs provide rich and radiant colour mixing while convection cooling allows for noise-free operation. The compact black ABS enclosure of the CLPFLAT1RGB10IR incorporates adjustable twin brackets, DMX input and output on XLR connectors and IEC power connectors for daisy chaining up to 10 units. The Cameo CLPFLAT1RGB10IR features IR remote control capability, 4 DMX modes, sound control and a display with mode, enter, up and down keys. It can be used as master, slave and standalone, and at 15 watts only the unit's power consumption is extremely low. An IR remote control is available as accessory (CLPFLAT1REMOTE).

Model Name:	CLPFLAT1RGB10IR (black housing) / CLPFLAT1RGB10IRWH (white housing)
Product Type:	LED Par Can
Type:	Flat PAR
Colour Range:	RGB
Number of LEDs:	144 (48 x Red, 48 x Green, 48 x Blue)
LED Type:	10 mm
Beam Angle:	14°
DMX Input:	XLR 3-pin
DMX Output:	XLR 3-pin
DMX Mode:	2-channel, 3-channel 1, 3-channel 2, 6-channel
DMX Functions:	Colour Fade, Colour Jump, Master Dimmer, RGB, Sound, Control, Strobe
Standalone Modes:	Colour Jump, Colour Fade, Slave Mode, Sound, Control, Static Colour, Colour Macro
Controls:	Mode, Value Down, Value Up, Enter
Indicators:	LED Display
Power Connector:	IEC connector male/female
Housing Material:	ABS
Housing Colour:	Black, White
Type of cooling:	Convection
Illuminance:	4,000 lx @ 1m
Dimensions (without mounting bracket):	180 x 175 x 115 mm



## STUDIO PAR 64 CAN RGBWA+UV

### 12 X 12 W **QUAD COLOUR LED PAR LIGHT**

#### RGBWA+UV IN BLACK HOUSING

The Cameo CLPST64RGBWAU12W is a professional PAR 64 projector with a 25° dispersion angle in a sturdy black housing made of cast metal with 12 bright 12 Watt 6-in-1 LEDs. The RGBWA+UV system allows for a creative lighting design with subtle pastel colours as well as brilliant, saturated colours. The refresh rate of 3,000 Hz provides for flicker-free operation.

- ▶ 12 x 12 W Ultra High Power RGBWA+UV LEDs
- ▶ Highest flexibility for perfect mixing of solid, pastel colours to warm rich colours and ultra violet
- ▶ Flicker Free with a refresh rate of 3,000 Hz
- ▶ Operation via DMX, in Master / Slave mode or as a single projector
- ▶ 5 DMX modes for flexible operation
- ▶ Built-in microphone for sound-control mode
- ▶ Simple to operate using the four buttons and LC-display
- ▶ Original Neutrik Powercon In- and Outputs
- ▶ Sturdy metal housing with double brackets



WATCH THE DEMO-VIDEO:



Model Name:	CLPST64RGBWAU12W
Product Type:	LED Par Can
Type:	PAR 64
Colour Range:	RGBWA + UV
Number of LEDs:	12
LED Type:	12W 6in1 Colour
Refreh Rate	3,000 Hz
Dispersion:	25°
DMX Input:	XLR 3-pin male
DMX Output:	XLR 3-pin female
DMX Mode:	2-channel, 3-channel 1, 3-channel 2, 6-channel, 9-channel
DMX Functions:	Colour Fade, Colour Jump, RGBWA+UV, Sound Control, Strobe
Standalone Modes:	Colour Jump, Colour Fade, Slave Mode, Sound Control, Static Colour, Colour Macro, Strobe
Controls:	Mode, Value Down, Value Up, Enter
Display:	Backlit LCD
Operating Voltage:	100V AC- 240V AC, 50 - 60 Hz
Power Consumption:	55W
Power Connector:	Neutrik PowerCon
Housing Material:	Metal
Housing Colour:	Black
Type of Cooling:	Fan
Fuse:	F2AL / 250V
Dimensions (without mounting bracket):	230 x 220 x 255 mm





# STUDIO PAR 64 CAN Q 8W

## 18 X 8 W QUAD COLOUR LED PAR CAN RGBW IN BLACK HOUSING

Extremely high-powered LED studio PAR in a black short housing. Ruggedly made housing in studio look with built-in filter frame holder. The Cameo CLPST64Q8W has a total of 18 quad LEDs (RGBW), thus guaranteeing perfect mixing of solid and pastel colours – including white. With a power consumption of just 170 watts, the 8-Watt quad LEDs produce an impressive level of brightness with a beam angle of 25 degrees. It is operated using four buttons and an LED display on the back. The CLPST64Q8W is equipped with a super-quiet fan for cooling. There are three operating modes. In addition to DMX operation with 2, 3, 4 or 7-channels, this LED PAR can also be operated in standalone mode or via sound control. The CLPST64Q8W runs on mains voltages of 110 to 240 volts, so it can be used universally and worldwide.

- ▶ 18 x 8 W Ultra High Power QUAD RGBW LEDs
- ▶ RGBW for perfect mixing of solid and pastel colours
- ▶ Operated via DMX, in master/slave mode or standalone mode
- ▶ Integrated microphone for sound control mode
- ▶ Simple to operate using the four buttons and LED display
- ▶ Double brackets included as standard
- ▶ Sturdy metal housing

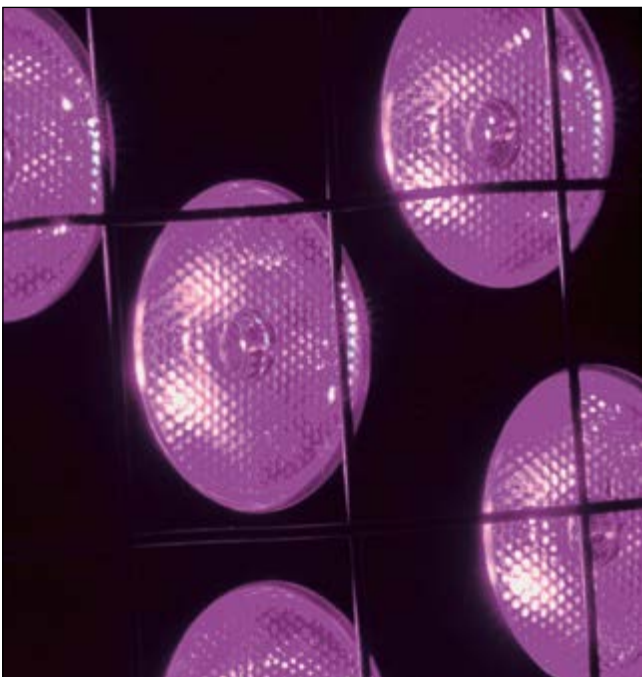


WATCH THE DEMO-VIDEO:



Model Name:	CLPST64Q8W
Product Type:	LED Par Can
Type:	Studio PAR 64
Colour Range:	RGBW
Number of LEDs:	18
LED Type:	8 W QUAD Colour
Beam Angle:	25°
DMX Input:	XLR 3-pin male
DMX Output:	XLR 3-pin female
DMX Mode:	2/3/4/7-channel selectable
DMX Functions:	RGBW, Master Dimmer, Strobe, Sound Control, Colour Jump, Colour Fade
Standalone Modes:	Static Colour, Colour Fading, Colour Jump, Sound Control, Slave
Controls:	Enter, Mode, Value Up, Value Down
Indicators:	LED Display
Power Connector:	Power Cord with Safety Plug (Type E / CEE 7/7)
Housing Material:	Metal
Housing Colour:	Black
Type of cooling:	Fan
Illuminance:	14,500 lx @ 1m
Dimensions (without mounting bracket):	230 x 220 x 255 mm





# STUDIO PAR 64 CAN RGB A Q 8W

18 X 8W **QUAD COLOUR LED PAR CAN** RGB A  
IN BLACK HOUSING

The Cameo CLPST64RGBAQ8W is a professional Studio PAR 64 projector with a 25° dispersion angle in a classic black metal housing. 18 energyefficient high-performance 8 Watt Quad LEDs in the RGB A-system (RGB additive Colour System plus amber LEDs) for a natural colour mix with a high light output, the extremely high refresh rate of 5,000 Hz for flickerfree operation and therefore also ideal for TV-production.

- ▶ 18 x 8 W Ultra High Power QUAD RGB A LEDs
- ▶ RGB A for warmer richer colours
- ▶ Operation via DMX, in Master/Slave mode or as a single projector
- ▶ Built-in microphone for sound-control mode
- ▶ Simple to operate using the four buttons and LED display
- ▶ Double bracket included
- ▶ Sturdy metal housing



WATCH THE DEMO-VIDEO:



Model Name:	CLPST64RGBAQ8W
Product Type:	LED Par Can
Type:	Studio PAR 64
Colour Range:	RGB A
Number of LEDs:	18
LED Type:	8 W QUAD Colour
Beam Angle:	25°
DMX Input:	XLR 3-pin male
DMX Output:	XLR 3-pin female
DMX Mode:	2-channel, 3-channel 1, 3-channel 2, 4-channel, 7-channel
DMX Functions:	sound control, strobe, colour fade, colour jump, master dimmer, RGB A
Standalone Modes:	Colour Macro, colour jump, colour fade, slave mode, sound control, static colour
Controls:	Value Down, Enter, mode, Value Up
Indicators:	LED Display
Power Connector:	Power Cord with Safety Plug (Type E / CEE 7/7)
Housing Material:	Metal
Housing Colour:	Black
Type of cooling:	Fan
Illuminance:	12,000 lx @ 1m (+/- 10%)
Dimensions (without mounting bracket):	230 x 220 x 255 mm





## STUDIO PAR 64 CAN TRI 3W

18 X 3W **TRI COLOUR LED PAR CAN** RGB  
IN BLACK HOUSING

Professional Studio PAR with 18 ultra-bright 3-Watt TRI LEDs in a sturdy, black aluminium housing with a beam angle of 25 degrees. It is actuated either via the DMX protocol (3-pin XLR) with six control channels, in master/slave mode or standalone mode (sound control, colour change, solid colours). The CLPST64TRI3W is operated via four push buttons and an LED display. Its power consumption is a mere 60 Watts.

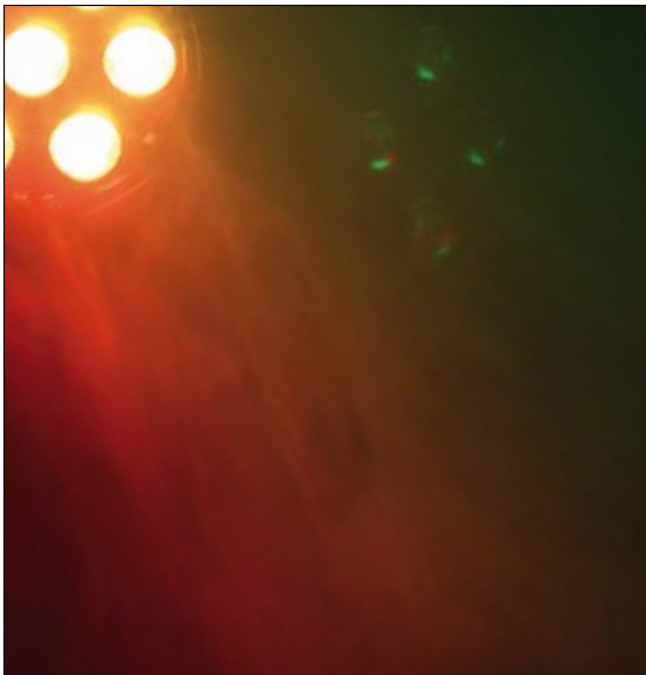
- ▶ 18 x 3 W High Power TRI RGB LEDs
- ▶ Low power consumption
- ▶ Operated via DMX, in master/slave mode or standalone mode
- ▶ Integrated microphone for sound control mode
- ▶ Simple to operate using the four buttons and LED display
- ▶ Sturdy metal housing



WATCH THE DEMO-VIDEO:



Model Name:	CLPST64TRI3W
Product Type:	LED Par Can
Type:	Studio PAR 64
Colour Range:	RGB
Number of LEDs:	18
LED Type:	3 W TRI Colour
Beam Angle:	25°
DMX Input:	XLR 3-pin male
DMX Output:	XLR 3-pin female
DMX Mode:	6-channel
DMX Functions:	RGB, Master Dimmer, Strobe, Sound Control, Colour Jump, Colour Fade
Standalone Modes:	Static Colour, Colour Change, Colour Fading, Sound Control, Slave
Controls:	Mode, Enter, Value Up, Value Down
Indicators:	LED Display
Power Connector:	Power Cord with Safety Plug (Type E / CEE 7/7)
Housing Material:	Metal
Housing Colour:	Black
Type of cooling:	Fan
Illuminance:	7,650 lx @ 1m
Dimensions (without mounting bracket):	230 x 220 x 260 mm



**STUDIO MINI PAR CAN Q 8W**  
**7 X 8 W QUAD COLOUR LED PAR CAN** RGBW  
IN BLACK OR WHITE HOUSING

Extremely powerful studio mini PAR with seven 8-watt QUAD COLOUR LEDs for optimal colour mixing and perfect white light. This studio LED PAR has a beam angle of 25 degrees and is controlled via five DMX modes. An LED display on the back and four buttons ensure simple and practical operation. Alternatively, the studio mini PAR can also be operated in standalone mode with a built-in microphone and sound control. Sturdy black or white housing with double bracket for use as a floor PAR or on stands or traverses. Maximum power consumption 60 watts.

- ▶ 7 x 8 W Ultra High Power QUAD RGBW LEDs
- ▶ RGBW for perfect mixing of solid and pastel colours
- ▶ Operated via DMX, in master/slave mode or standalone mode
- ▶ Integrated microphone for sound control mode
- ▶ Simple to operate using the four buttons and LED display
- ▶ Double brackets included as standard
- ▶ Compact, sturdy metal housing



WATCH THE DEMO-VIDEO:



Model Name:	CLPSTMINIQ8W (black housing) / CLPSTMINIQ8WWH (white housing)
Product Type:	LED Par Can
Type:	Studio Mini PAR
Colour Range:	RGBW
Number of LEDs:	7
LED Type:	8 W QUAD Colour
Refresh Rate:	5,000 Hz
Beam Angle:	25°
DMX Input:	XLR 3-pin male
DMX Output:	XLR 3-pin female
DMX Mode:	2-channel, 3-channel 1, 3-channel 2, 4-channel, 7-channel
DMX Functions:	RGBW, Master Dimmer, Strobe, Colour Jump, Colour Fade
Standalone Modes:	Static Colour, Colour Change, Colour Fading, Sound Control, Slave
Controls:	Mode, Enter, Value Up, Value Down
Indicators:	LED Display
Power Connector:	Power Cord with Safety Plug (Type E / CEE 7/7)
Housing Material:	Aluminium
Housing Colour:	Black / White
Type of cooling:	Fan
Illuminance:	6,640 lx @ 1m
Dimensions (without mounting bracket):	168 x 183 x 186 mm





IR-Remote included

## STUDIO MINI PAR CAN Q 4W W

7 X 4 W **COLD WHITE / WARM WHITE LED PAR CAN**  
IN BLACK OR WHITE HOUSING

The Cameo CLPSTMINIQ4WW is a compact all-white studio PAR light. Featuring 7 powerful 4-watt 2-in-1 LEDs, the miniature fixture creates varying degrees of colour temperature and brightness from warm to cold white with a focused 35° coverage. The CLPSTMINIQ4WW allows for 2, 5 and 6-channel DMX modes and master, slave and standalone operation with a variety of functions, 17 temperature presets and infrared remote control capability. Mode, Enter, Value Up and Down keys and the clear LED display provide easy menu access. Available in black and white, the CLPSTMINIQ4WW incorporates adjustable twin brackets for truss, floor and other mounting options.

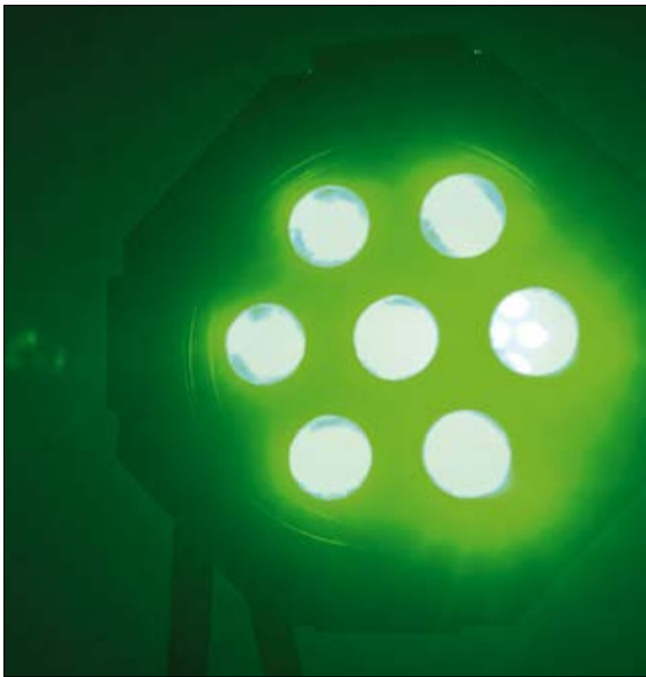
- ▶ 7 x 4 W High Power Cold White/Warm White LEDs
- ▶ 17 presets for different colour temperatures
- ▶ IR-Remote included
- ▶ Operated via DMX, in master/slave mode or standalone mode
- ▶ Integrated microphone for sound control mode
- ▶ Simple to operate using the four buttons and LED display
- ▶ Double brackets included as standard
- ▶ Compact, sturdy metal housing



WATCH THE DEMO-VIDEO:



Model Name:	CLPSTMINIQ4WW (black housing) / CLPSTMINIQ4WWWH (white housing)
Product Type:	LED Par Can
Type:	Studio Mini PAR
Colour Range:	Cold White / Warm White
Number of LEDs:	7
LED Type:	4 W 2 in 1 LED
Beam Angle:	35°
DMX Input:	XLR 3-pin male
DMX Output:	XLR 3-pin female
DMX Mode:	2-channel, 5-channel, 6-channel
DMX Functions:	Master Dimmer, Cool White, Warm White, Strobe, Colour Temperature
Standalone Modes:	Slave, Static Colour Mode, Colour Temperature (17 Presets)
Controls:	Mode, Enter, Value Up, Value Down
Indicators:	LED Display
Power Connector:	Power Cord with Safety Plug (Type E / CEE 7/7)
Housing Material:	Metal
Housing Colour:	Black / White
Type of cooling:	Fan
Illuminance:	5,000 lx @ 1m
Colour Temperature:	3,200 K - 6,500 K
Remote:	IR-Remote
Dimensions (without mounting bracket):	168 x 186 x 186 mm



**STUDIO MINI PAR CAN TRI 3W**  
7 X 3 W **TRI COLOUR LED PAR CAN** RGB IN BLACK  
OR WHITE HOUSING

Professional Mini-PAR in sturdy and compact black or white housing. The light is provided by seven ultra-bright 3-Watt TRI colour LEDS, and the beam angle is 25 degrees. Thanks to the colour mix in the LED itself, colours are added without coloured shadows or borders. The power consumption of the CLPSTMINITRI3W/WWH is a mere 30 Watts. The sturdy, compact housing features a double bracket for mounting to cross-beams and bars and for use as a floor PAR. It is actuated via DMX (6 channel) or in standalone mode. The CLPSTMINITRI3W/WWH has an integrated microphone for sound control.

- ▶ 7 x 3 W High Power TRI RGB LEDs
- ▶ Low power consumption
- ▶ Operated via DMX, in master/slave mode or standalone mode
- ▶ Integrated microphone for sound control mode
- ▶ Simple to operate using the four buttons and LED display
- ▶ Double brackets included as standard
- ▶ Compact, sturdy metal housing



WATCH THE DEMO-VIDEO:



Model Name:	CLPSTMINITRI3W (black housing) / CLPSTMINITRI3WWH (white housing)
Product Type:	LED Par Can
Type:	Studio Mini PAR
Colour Range:	RGB
Number of LEDs:	7
LED Type:	3 W TRI Colour
Beam Angle:	25°
DMX Input:	XLR 3-pin
DMX Output:	XLR 3-pin
DMX Mode:	6-channel
DMX Functions:	RGB, Master Dimmer, Strobe, Colour Jump, Colour Fade
Standalone Modes:	Static Colour, Colour Change, Colour Fading, Sound Control, Slave
Controls:	Mode, Enter, Value Up, Value Down
Indicators:	LED Display
Power Connector:	Power Cord with Safety Plug (Type E / CEE 7/7)
Housing Material:	Metal
Housing Colour:	Black / White
Type of cooling:	Convection
Illuminance:	4,070 lx @ 1m
Dimensions (without mounting bracket):	168 x 183 x 186 mm





**STUDIO MINI PAR CAN** COB 30W  
30 W **COB LED PAR CAN** RGB IN BLACK  
OR WHITE HOUSING

The Cameo CLPSTMINICOB30W is a compact studio PAR light using the RGB additive system. With innovative chip-on-board technology and powered by a single 30 W COB LED, the miniature fixture creates rich, natural colours and pastel hues alike with uniform coverage and a 55° beam angle. The CLPSTMINI-COB30W provides DMX control in 2-channel, 3-channel 1, 3-channel 2 and 6-channel modes and a variety of functions including strobe effects. It is capable of master, slave and standalone operation and features a built-in microphone for sound activation. Mode, Enter, Value Up and Down keys and the clear LED display allow for easy menu access. The CLPSTMINICOB30W is available in black and white with easily adjustable twin brackets providing truss, floor and other mounting options.

- ▶ Powerful and innovative 30 W RGB COB LED
- ▶ For rich, natural colours and illumination uniformity
- ▶ Wide beam angle
- ▶ Operated via DMX, in master/slave mode or standalone mode
- ▶ Integrated microphone for sound control mode
- ▶ Simple to operate using the four buttons and LED display
- ▶ Double brackets included as standard
- ▶ Compact, sturdy metal housing



WATCH THE DEMO-VIDEO:



Model Name:	CLPSTMINICOB30W (black housing) / CLPSTMINICOB30WWH (white housing)
Product Type:	LED Par Can
Type:	Studio Mini PAR
Colour Range:	RGB
Number of LEDs:	1
LED Type:	30W COB
Beam Angle:	55°
DMX Input:	XLR 3-pin
DMX Output:	XLR 3-pin
DMX Mode:	2-channel, 3-channel 1, 3-channel 2, 6-channel
DMX Functions:	RGB, Master Dimmer, Strobe, Colour Jump, Colour Fade
Standalone Modes:	Static Colour, Colour Change, Colour Fading, Sound Control, Slave
Controls:	Mode, Enter, Value Up, Value Down
Indicators:	LED Display
Power Connector:	Power Cord with Safety Plug (Type E / CEE 7/7)
Housing Material:	Metal
Housing Colour:	Black / White
Type of cooling:	Fan
Dimensions (without mounting bracket):	168 x 183 x 186 mm



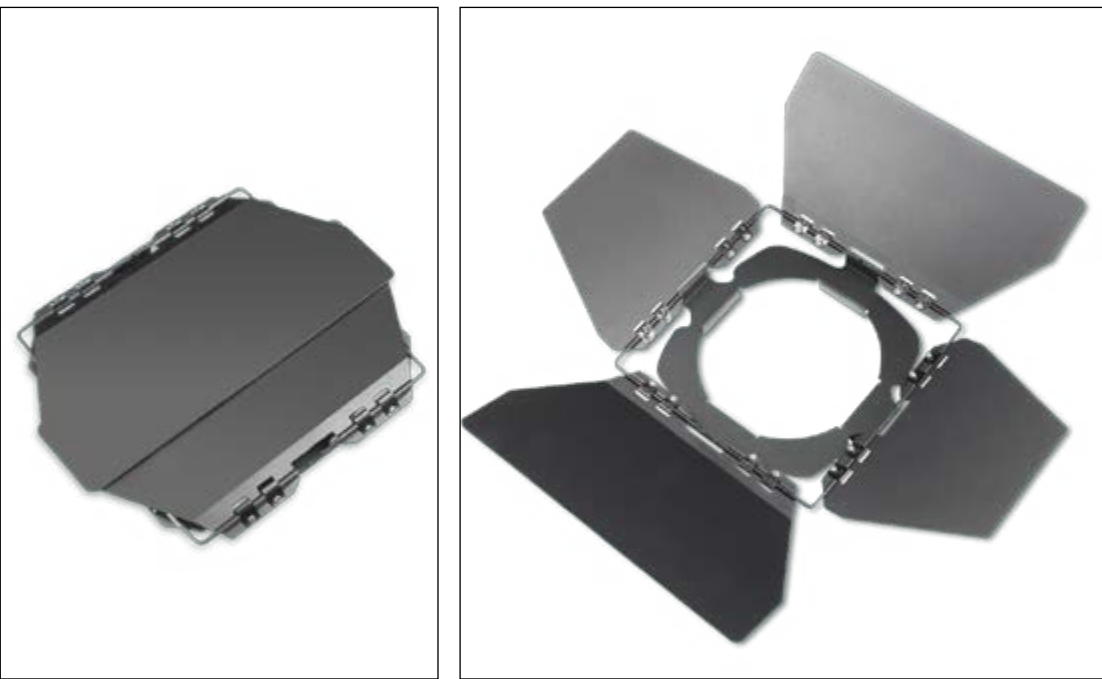
STUDIO PAR **BARN DOOR 1**  
**BARN DOORS** FOR STUDIO MINI PAR  
IN BLACK OR WHITE

Barn doors for Studio Mini Par with  
4 adjustable leaves

suitable for  
CLPSTMINICOB30W/WH  
CLPSTMINIQ4WW/WH  
CLPSTMINIQ8W/WH  
CLPSTMINITRI3W/WH  
CLPSTMINICOB30W/WH



Model Name:	CLPSTBARND00R1B (black housing) / CLPSTBARND00R1WH (white housing)
Product Type:	BARN DOORS
Material:	Metal
Colour:	Black / White



STUDIO PAR **BARN DOOR 2**  
**BARN DOORS** FOR STUDIO PAR  
IN BLACK

Barn doors for Studio Par with  
4 adjustable leaves

suitable for  
CLPST64Q8W  
CLPST64RGBAQ8W  
CLPST64TRI3W



Model Name:	CLPSTBARND00R2B
Product Type:	BARN DOORS
Material:	Metal
Colour:	Black





CLPFLATPRO18IP65

CLPFLATPRO12IP65

CLPFLATPRO07IP65

- ▶ High performance with ultra bright 10W LEDs
- ▶ Super silent due to convection cooling
- ▶ RGBWA colour spectrum for more flexible colour mixing reaching from warm, rich to solid and pastel colours
- ▶ Flicker Free
- ▶ IP65 for outdoor use
- ▶ Rugged flat and compact metal housing



WATCH THE DEMO-VIDEO:



## FLAT PRO SERIES OUTDOOR 10 W LED PAR CAN RGBWA IN BLACK HOUSING

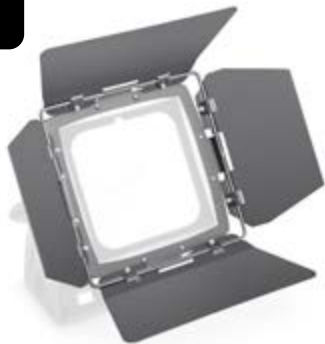
With their IP65 rating the Cameo FLAT PRO SERIES professional outdoor PAR lights support stunning, highly creative lighting in the open. High performance ultra bright 10 watt RGBWA LEDs produce a huge range of colours from soft pastel hues to rich, warm tints with a 30° beam angle. In addition, the FLAT PRO outdoor lights' 3,000 Hz refresh rate eliminates flicker.

The CLPFLATPRO07IP65, CLPFLATPRO12IP65 and CLPFLATPRO18IP65's die-cast enclosures are rated IP65 according to EN 60529 and totally protected against dust and low pressure water jets from all directions.

Model Name:	CLPFLATPRO18IP65 / CLPFLATPRO12IP65 / CLPFLATPRO07IP65
Product Type:	LED Par Can
Type:	Flat PAR
Colour Range:	RGBWA
Number of LEDs:	18/12/7
LED Type:	10W
Beam Angle:	30°
DMX Input:	3-pin Special Connector, Screwable
DMX Output:	3-pin Special Sonnetor, Screwable
DMX Mode:	2-channel, 3-channel-1, 3-channel-2, 5-channel, 8-channel
DMX Functions:	Colour Jump, Colour Fade, Strobe, Master Dimmer, RGBWA
Standalone Modes:	Colour Jump, Colour Fade, Static Colour, Slave Mode, Colour Macro
Controls:	Mode, Enter, Value Up, Value Down
Indicators:	LED Display
Power Connector:	3-pin Special Screw Connector
Housing Material:	Metal
Housing Colour:	Black
IP Class:	65
Type of cooling:	Convection
Illuminance:	23,000 lx @ 1m / 15,000 lx @ 1m / 10,000 lx @ 1m
Dimensions (without mounting bracket):	280 x 280 x 160 mm / 230 x 230 x 160 mm / 180 x 180 x 160 mm



- ▶ 1 x 60 W Tri Colour COB LED
- ▶ IP65 rated for outdoor applications
- ▶ Flicker free
- ▶ 120 degrees dispersion for perfect wall-washing effects
- ▶ DMX control plus master, slave and standalone modes
- ▶ Easy to operate via mode, enter, up and down keys with backlit display
- ▶ Menu lock to prevent unauthorized access
- ▶ Compact heavy-duty metal enclosure
- ▶ Universal mounting bracket
- ▶ DMX and mains input and output on screw connectors
- ▶ Barn doors available as accessory



**Optional Accessory**  
FLAT PRO FLOOD  
BARN DOOR

**CLFLOODBARNDOOR**

## FLAT PRO FLOOD IP65 TRI

OUTDOOR FLOOD LIGHT WITH 60 W **TRI-COLOUR**  
**COB LED** IN BLACK HOUSING

The Cameo FLAT PRO series FLOOD IP65 TRI is a compact outdoor LED flood light with IP65 rating, 120° beam angle and convection cooling. A 60 watt tri-colour COB LED generates rich, saturated RGB colours with a 3,000 Hz refresh rate providing flicker free performance. The black heavy-duty metal enclosure features screw connectors for DMX and mains input and output plus a backlit display with mode, enter, up and down keys for easy operation. The Cameo FLOOD IP65 TRI allows for 2-channel, 3-channel 1, 3-channel 2 and 6-channel DMX control as well as master, slave and standalone modes while a setting lock prevents unauthorized menu access. The universal bracket adds a wide variety of mounting options. Barn doors are available as accessory.

Model Name:	CLFLOODIP65TRI
Product Type:	LED Flood Light
Type:	Flat Pro
Colour Range:	RGB
Number of LEDs:	1
LED Type:	60W COB TRI LED
Refresh Rate:	3,000 Hz
Dispersion:	120°
DMX Input:	3-pin Special Connector, Screwable
DMX Output:	3-pin Special Sonnector, Screwable
DMX Mode:	2-channel, 3-channel-1, 3-channel-2, 6-channel
DMX Functions:	Colour Jump, Colour Fade, Colour Macro, Strobe, Master Dimmer, RGB
Standalone Modes:	Colour Jump, Colour Fade, Static Colour, Master/Slave Mode, Colour Macro, Auto Run
Controls:	Mode, Enter, Value Up, Value Down
Indicators:	Backlit LC-Display
Operating Voltage:	110 V AC - 240 V AC, 50 - 60 HZ
Power Consumption:	75W
Power Connector:	3-pin Special Connector, Screwable
Housing Material:	Metal
Housing Colour:	Black
IP Class:	65
Type of cooling:	Convection
Illuminance:	830 lx @ 1m
Dimensions (without mounting bracket):	180 x 180 x 120 mm





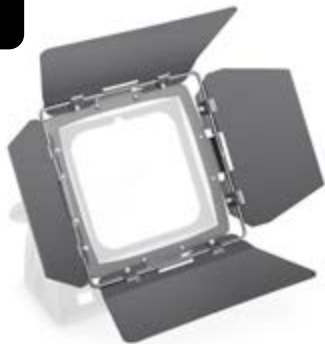
# FLAT PRO FLOOD IP65 WW

OUTDOOR FLOOD LIGHT WITH 50 W **WARM WHITE**  
**COB LED** IN BLACK HOUSING

The Cameo FLAT PRO series FLOOD IP65 WW is a compact outdoor LED flood light with IP65 rating, 120° beam angle and convection cooling. A 50W COB LED generates bright warm white light with a 3,000 Hz refresh rate providing flicker free performance. The black heavy-duty metal enclosure features screw connectors for DMX and mains input and output plus a backlit display with mode, enter, up and down keys for easy operation. The Cameo FLOOD IP65 WW allows for 1-channel and 3-channel DMX control as well as master, slave and standalone modes while a setting lock prevents unauthorized menu access. The universal bracket adds a wide variety of mounting options. Barn doors are available as accessory.

Model Name:	CLFLOODIP65WW
Product Type:	LED Flood Light
Type:	Flat Pro
Colour Range:	Warm White
Number of LEDs:	1
LED Type:	50W COB LED
Refresh Rate:	3,000 Hz
Dispersion:	120°
DMX Input:	3-pin Special Connector, Screwable
DMX Output:	3-pin Special Connector, Screwable
DMX Mode:	1-channel, 3-channel
DMX Functions:	Strobe, Master Dimmer, Dimmer Curve
Standalone Modes:	Static, Master / Slave Mode, Strobe
Controls:	Mode, Enter, Value Up, Value Down
Indicators:	Backlit LC-Display
Operating Voltage:	100 V AC - 240 V AC, 50 - 60 HZ
Power Consumption:	65W
Power Connector:	3-pin Special Connector, Screwable
Housing Material:	Metal
Housing Colour:	Black
Protection Class IP:	65
Type of cooling:	Convection
Illuminance:	1,700 lx @ 1m
Dimensions (without mounting bracket):	180 x 180 x 120 mm

- ▶ 1 x 50 W warm white COB LED
- ▶ IP65 rated for outdoor applications
- ▶ Flicker free
- ▶ 120 degrees dispersion for perfect wall-washing effects
- ▶ DMX control plus master, slave and standalone modes
- ▶ Easy to operate via mode, enter, up and down keys with backlit display
- ▶ Menu lock to prevent unauthorized access
- ▶ Compact heavy-duty metal enclosure
- ▶ Universal mounting bracket
- ▶ DMX and mains input and output on screw connectors
- ▶ Barn doors available as accessory



**Optional Accessory**  
FLAT PRO FLOOD  
**BARN DOOR**

**CLFLOODBARNDOOR**



## OUTDOOR PAR TRI 12 IP 65

### 12X3W TRI COLOUR LED OUTDOOR PAR CAN

### RGB IN BLACK HOUSING

The Cameo CLPSTTRI12IP is a heavy-duty PAR light with twelve 3-watt tri-colour LEDs for smooth RGB colour mixing and a focused 25° beam angle. It is especially intended for professional outdoor applications featuring purpose-designed screw connectors and an IP65 rating. The CLPSTTRI12IP can be controlled via DMX and provides a variety of colour macro, jump, fade and strobe functions. It is also capable of slave and standalone operation with Mode, Enter, Value Up and Down keys and a clear LED display permitting easy menu access. The Cameo CLPSTTRI12IP is equipped with dual brackets that are easily adjustable for multiple mounting options.

- ▶ 12 x 3 W High Power TRI RGB LEDs
- ▶ IP65 for outdoor use
- ▶ Operated via DMX, in master/slave mode or standalone mode
- ▶ Simple to operate using the four buttons and LED display
- ▶ Double brackets included as standard
- ▶ Rugged compact metal housing



WATCH THE DEMO-VIDEO:



Model Name:	CLPSTTRI12IP
Product Type:	LED Par Can
Type:	Outdoor PAR
Colour Range:	RGB
Number of LEDs:	12
LED Type:	3 W TRI Colour
Beam Angle:	25°
DMX Input:	3-pin Special Connector, Screwable
DMX Output:	3-pin Special Connector, Screwable
DMX Mode:	2-channel, 3-channel 1, 3-channel 2, 6-channel
DMX Functions:	RGB, Master Dimmer, Strobe, Colour Macro, Colour Jump, Colour Fade
Standalone Modes:	Static Colour, Colour Change, Colour Fading, Slave
Controls:	Mode, Enter, Value Up, Value Down
Indicators:	LED Display
Power Connector:	3-pin Special Connector, Screwable
Housing Material:	Metal
IP Class:	65
Illuminance:	5,900 lx @ 1m
Dimensions (without mounting bracket):	203 x 203 x 193 mm





# POWER EXTENSION CABLE IP65

IP65

Model Name:	CLPEX001
Product Type:	Extension Cable
Type:	Power Cord
Protection class IP:	65
Length:	1 m
Model Name:	CLPEX003
Product Type:	Extension Cable
Type:	Power Cord
Protection class IP:	65
Length:	3 m
Model Name:	CLPEX005
Product Type:	Extension Cable
Type:	Power Cord
Protection class IP:	65
Length:	5 m
Model Name:	CLPEX010
Product Type:	Extension Cable
Type:	Power Cord
Protection class IP:	65
Length:	10 m
Model Name:	CLPEX020
Product Type:	Extension Cable
Type:	Power Cord
Protection class IP:	65
Length:	20 m



IP65

# DMX EXTENSION CABLE IP65

Model Name:	CLDMXEX001
Product Type:	Extension Cable
Type:	DMX Cable
Protection class IP:	65
Length:	1 m
Model Name:	CLDMXEX003
Product Type:	Extension Cable
Type:	DMX Cable
Protection class IP:	65
Length:	3 m
Model Name:	CLDMXEX005
Product Type:	Extension Cable
Type:	DMX Cable
Protection class IP:	65
Length:	5 m
Model Name:	CLDMXEX010
Product Type:	Extension Cable
Type:	DMX Cable
Protection class IP:	65
Length:	10 m
Model Name:	CLDMXEX020
Product Type:	Extension Cable
Type:	DMX Cable
Protection class IP:	65
Length:	20 m



- ▶ 4 x 7 ultra-bright 8 W QUAD RGBW LEDs
- ▶ RGBW for perfect mixing of solid and pastel colours
- ▶ Professional 28-mm TV adapter for mounting
- ▶ Optional footswitch for easy on stage controlling
- ▶ IR-Remote included
- ▶ Operated via DMX, in master/slave mode or standalone mode
- ▶ Integrated microphone for sound control
- ▶ Simple to operate using the four buttons and LC-Display
- ▶ Heavy duty aluminium housing
- ▶ Practical transport case included as standard



WATCH THE DEMO-VIDEO:



Also available:  
Set with lighting stand  
+ 4 pedal foot switch

CLMPAR3SET3



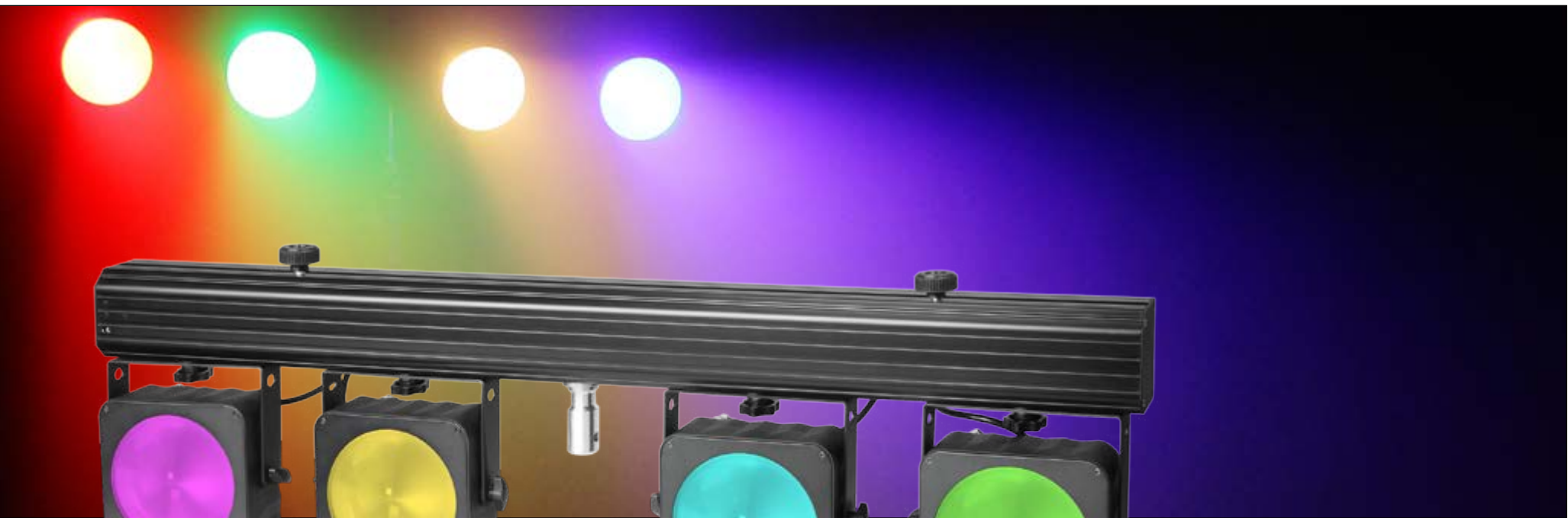
## MULTI PAR 3

### COMPACT 28X8 W QUAD COLOUR LED LIGHTING SET INCL. TRANSPORT CASE

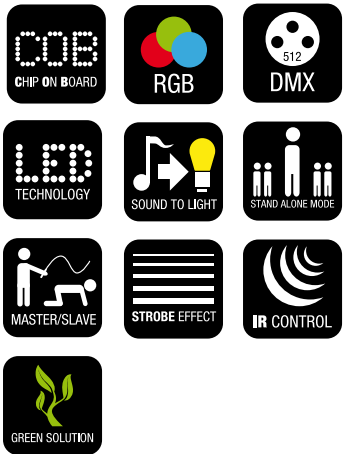
The Cameo CLMPAR3 is an especially compact and flexible lighting system for professional requirements with maximum brightness and perfect RGBW colour mixing. The four flat PAR floodlights, each with seven ultrabright 8 W quad LEDs and 25° beam angle, are convection cooled and mounted on a bar with integral controls and all connectors so that they are individually aimable. Neutrik Powercon sockets are used for power supply and passing on incoming power; external components can be powered via two Safety sockets that are switchable by remote control. The lighting system is controlled via DMX, the included IR remote control, an optional foot pedal or the clearly arranged, illuminated LC display with four function keys.

Model Name:	CLMPAR3
Product Type:	Compact LED Lighting Set
Type:	4 Flat Can Bar
Colour Range:	RGBW
Number of LEDs:	4 x 7
LED Type:	8 W QUAD Colour
Beam Angle:	25°
DMX Input:	XLR 3-pin male
DMX Output:	XLR 3-pin female
DMX Mode:	4-channel 1, 4-channel 2, 6-channel, 8-channel, 9-channel, 16-channel, 21-channel selectable
DMX Functions:	RGBW, Master Dimmer, Strobe, Sound Control, Program Mode, switchable power sockets 1/2
Standalone Modes:	Program Mode (Static Colour, Colour Change, Colour Fading,...), Sound Mode, Slave, Auto Run, Dimmer Mode
Standalone Features:	Flow Invert, Dimmer Curve, Master Dimmer
Remote Connector:	XLR-5 pin female
Controls:	Mode, Enter, Value Up, Value Down
Wireless Remote Control:	IR
Indicators:	2 x 16 Digit LC-Display
Power Supply	90 V AC - 250 V AC
Power Consumption	210 W
Power Connector:	Neutrik Powercon In/Out
Switchable Power Out:	2 x Safety
Housing Material:	Metal
Housing Colour:	Black
Dimensions:	1,030 x 290 x 100 mm





- ▶ 4 x 30W ultra-bright RGB LEDs
- ▶ COB Technology for smooth colour mixing
- ▶ Professional 28-mm TV adapter for mounting
- ▶ New designed optional footswitch for easy on stage controlling
- ▶ IR-Remote included
- ▶ Operated via DMX, in master/slave mode, standalone mode or via IR-Remote
- ▶ Integrated microphone for sound control
- ▶ Simple to operate using the four buttons and LC-Display
- ▶ Heavy duty aluminium housing
- ▶ Practical transport case included
- ▶ Installation points and switchable power plugs for 2 additional lights



WATCH THE DEMO-VIDEO:



**Also available:**  
Set with lighting stand  
+ 4 pedal foot switch  
  
**CLMPARCOB1SET2**



## MULTI PAR COB1

### COMPACT 4X30 W RGB COB LED LIGHTING SET INCL. TRANSPORT CASE

The Cameo CLMPARCOB1 is a compact and lightweight professional lighting system using modern chip-on-board LED technology, which is extremely durable and very energy efficient. The four flat PAR spotlights with a 50° beam angle are ultra bright 30 W COB LEDs designed for intensive RGB colour mixing and both horizontal and vertical alignment.

Model Name:	CLMPARCOB1
Product Type:	LED lighting system
Type:	Multi PAR system
Colour Range:	RGB
Number of LEDs:	4 x 1
LED Type:	30 W COB
beam angle:	50°
DMX Input:	XLR 3-pin male
DMX Output:	XLR 3-pin female
DMX Mode:	6-channel, 8-channel, 4-channel, 17-channel, 3-channel, 7-channel, 12-channel, 5-channel
DMX Functions:	RGB, master dimmer, 13 Programs, strobe, sound control, switchable power sockets 1/2
Standalone Modes:	strobe, 13 Programs, sound control, Auto run, slave mode, static colour
Standalone Features:	Flow Invert, Dimmer Curve, Master Dimmer
Controls:	IR Remote, Value Up, Value Down, mode, Enter
Remote connection:	XLR 5-pin female
Display:	Multifunction LC-Display
Power Supply	90 V AC - 250 V AC, 50 - 60 Hz
Power Consumption	55 W
Power Connector:	Neutrik PowerCon
Housing Material:	Metal
Housing Colour:	Black
TV spigot:	28 mm
Dimensions:	1,005 x 285 x 80 mm
Accessorie (included):	Power Cord 3 m
Other features:	Installation points for 2 additional lights, Neutrik PowerCon output, IR Remote



- ▶ 4 x 7 ultra-bright 3W TRI RGB LEDs
- ▶ Professional 28-mm TV spigot for mounting
- ▶ Optional footswitch for easy on stage controlling
- ▶ Operated via DMX, in master/slave mode or standalone mode
- ▶ Integrated microphone for sound control
- ▶ Simple to operate using the four buttons and LC-Display
- ▶ Sturdy metal housing
- ▶ Practical transport case included as standard



WATCH THE DEMO-VIDEO:



Also available:  
Set with lighting stand  
+ 4 pedal foot switch

CLMPAR2SET3



## MULTI PAR 2

### COMPACT 28X3W TRI COLOUR LED LIGHTING SET INCL. TRANSPORT CASE

The four compact flat cans mounted on a bar with integrated control make the CLMPAR2 the ideal basic kit for stage lighting. A total of 28 ultra-bright 3-Watt TRI colour LEDs create awe-inspiring brightness and a perfect colour mix. The CLMPAR2 is equipped with 3-pin inputs and outputs to enable actuation via DMX with 6, 9 or 15 channels. Alternatively, the CLMPAR2 can be actuated with an optional controller, which is connected via the corresponding five-pin cable. The four sturdy foot switches allow access to all of the show's key parameters. Of course, the CLMPAR2 also works in standalone mode, with a microphone for sound control integrated into aThe CLMPAR2 is powered via a removable Safety cable and is equipped with a 28-mm TV adapter for tripod-mounting. The practical transport case is included as standard.

Model Name:	CLMPAR2
Product Type:	Compact LED Lighting Set
Type:	4 Flat Can Bar
Colour Range:	RGB
Number of LEDs:	4 x 7
LED Type:	3W TRI Colour
Beam Angle:	25°
DMX Input:	XLR 3-pin
DMX Output:	XLR 3-pin
DMX Mode:	6/9/15-channel selectable
DMX Functions:	RGB, Master Dimmer, Strobe, Sound Control, Colour Jump, Colour Fade
Standalone Modes:	Static Colour, Colour Change, Colour Fading, Sound Control, Slave, Auto Mode
Remote Connector:	XLR-5 pin female
Controls:	Mode, Enter, Value Up, Value Down
Indicators:	LC-Display
Power Supply	100V AC - 250 V AC
Power Consumption	100 W
Power Connector:	IECC Euro Power Socket male, IECC Euro Power Socket female
Housing Material:	Metal
Housing Colour:	Black
TV-Spigot:	28 mm
Dimensions:	1,030 x 290 x 100 mm





- ▶ 4 x 108 powerful, long-life 10 mm RGB LEDs
- ▶ Professional 28-mm TV spigot for mounting
- ▶ Optional footswitch for easy on stage controlling
- ▶ Operated via DMX, in master/slave mode or standalone mode
- ▶ Integrated microphone for sound control
- ▶ Simple to operate using the four buttons and LC-Display
- ▶ Sturdy metal housing
- ▶ Practical transport case included as standard



WATCH THE DEMO-VIDEO:



## MULTI PAR 1

### COMPACT 432 X 10 MM LED LIGHTING SET INCL. TRANSPORT CASE

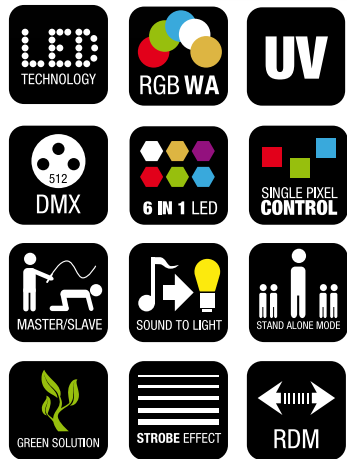
The four compact flat cans mounted on a bar with integrated control make the CLMPAR1 the ideal basic kit for stage lighting. Each of the four flat cans is fitted with 108 ultra-bright 10-mm LEDs, creating awe-inspiring brightness and the perfect colour mix. The CLMPAR1 is equipped with 3-pin inputs and outputs to enable actuation via DMX with 6, 9 or 15 channels. Alternatively, the CLMPAR 1 can be actuated by an optional controller. Of course, the CLMPAR1 also works in standalone mode, with a microphone for sound control integrated into the bar. A 4-way foot controller is available as an optional extra. The CLMPAR1 is powered via a removable Safety cable and is equipped with a 28-mm TV adapter for tripod-mounting. The practical transport case is included as standard.

Model Name:	CLMPAR1
Product Type:	Compact LED Lighting Set
Type:	4 Flat Can Bar
Colour Range:	RGB
Number of LEDs:	4 x 108
LED Type:	10 mm
Beam Angle:	25°
DMX Input:	XLR 3-pin
DMX Output:	XLR 3-pin
DMX Mode:	6/9/15-channel selectable
DMX Functions:	RGB, Master Dimmer, Strobe, Sound Control, Colour Jump, Colour Fade
Standalone Modes:	Static Colour, Colour Change, Colour Fading, Sound Control, Slave, Auto Mode
Remote Connector:	XLR-5 pin female
Controls:	Mode, Enter, Value Up, Value Down
Indicators:	LC-Display
Power Supply	100 V AC - 250 V AC
Power Consumption	50 W
Power Connector:	IECC Euro Power Socket male, IECC Euro Power Socket female
Housing Material:	Metal
Housing Colour:	Black
TV-Spigot:	28 mm
Dimensions:	1,030 x 290 x 100 mm





- ▶ Ultra-bright 12 W RGBWA+UV LEDs
- ▶ LED single pixel control for stunning chase and pixel mapping effects
- ▶ Absolutely silent operation due to efficient convection cooling
- ▶ Flicker free
- ▶ Professional connectivity with 3 and 5-pin DMX and Neutrik powerCON I/O
- ▶ RDM enabled
- ▶ 7-mode DMX control plus standalone operation with master and slave modes
- ▶ Diffusion lens included for a smooth wash with minimum dazzle
- ▶ 4 selectable dimming curves
- ▶ Colour temperature correction
- ▶ 3 preset temperatures of white: warm white, white, cool white
- ▶ Rugged die-cast aluminium housing



## LED BARS



## PIXBAR 600 PRO / PIXBAR 500 PRO 12X12W / 12X6W RGBWA+UV LED BAR

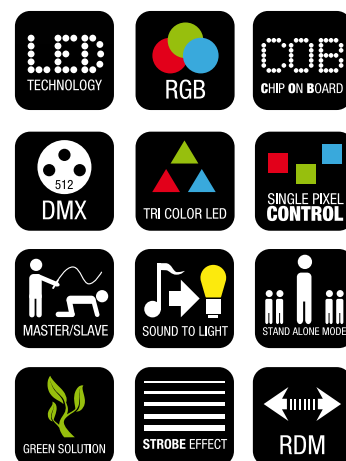
The Cameo PixBar 600/500 PRO is a wide-angle, convection-cooled LED bar for professional use, equipped with 12/6 super-bright 12W RGBWA+UV LEDs. It operates absolutely noiselessly and is flicker-free due to its high refresh rate of 3,600Hz. In addition to the almost unlimited range of colours that can be varied in temperature as well as the macros that are aligned with LEE filters, the PixBar offers 3 preset temperatures of white and 4 selectable dimmer curves. With the Single Pixel Control, all LEDs can also be individually adjusted to achieve impressive Chase effects. The fully RDM-enabled PixBar 600/500 PRO can communicate bidirectionally with RDM-controllers, to provide the address, status, and all parameters of the device. Naturally, the light bar can also be controlled via the standard DMX protocol in 7 control modes or used as a standalone, master and slave; it features 14 automatic modes and a built-in microphone for sound control.

Model Name:	CLPIXBAR600PRO	CLPIXBAR500PRO
Product Type:	LED BAR	LED BAR
Type:	Washer	Washer
Colour Range:	RGBWA+UV	RGBWA+UV
Number of LEDs:	12	6
LED Type:	12 W	12 W
Refresh Rate:	3,600 Hz	3,600 Hz
Beam Angle:	23° at 600 lx, 41° at 1,120 lx	23° at 600 lx, 41° at 1,120 lx
DMX Input:	XLR 3-pin male, XLR 5-pin male	XLR 3-pin male, XLR 5-pin male
DMX Output:	XLR 3-pin female, XLR 5-pin female	XLR 3-pin female, XLR 5-pin female
DMX Mode:	2-channel, 6 channel 1, 6 channel 2, 8-channel, 12-channel, 74-channel, 78-channel	2-channel, 6-channel 1, 6 channel 2, 8-channel, 12-channel, 38-channel, 42-channel
DMX Functions:	Single Pixel Control, 14 Auto Modes, Sound Mode, Colour Macros, Dimmer, Strobe	Single Pixel Control, 14 Auto Modes, Sound Mode, Colour Macros, Dimmer, Strobe
Standalone Modes:	14 Auto Modes, Sound Mode, Static, Strobe	14 Auto Modes, Sound Mode, Static, Strobe
Controls:	Mode, Enter, Value Up, Value Down	Mode, Enter, Value Up, Value Down
Indicators:	LC Display	LC Display
Power Supply:	110 V AC - 240 V AC, 50 - 60 Hz	110 V AC - 240 V AC, 50 - 60 Hz
Power Consumption:	160W	90W
Power Connector:	Neutrik PowerCon	Neutrik PowerCon
Cooling System:	Convection	Convection
Illuminance:	single LED 1,190 lx @ 1m	single LED 1,190 lx @ 1m
Housing Material:	die-cast aluminium	die-cast aluminium
Housing Colour:	Black	Black
Dimensions (without mounting bracket):	900 x 120 x 75 mm	450 x 120 x 75 mm





- ▶ Ultra bright 30 W COB LEDs
- ▶ LED single pixel control for stunning chase and pixel mapping effects
- ▶ Absolutely silent operation due to efficient convection cooling
- ▶ Flicker free
- ▶ Professional connectivity with 3 and 5-pin DMX and Neutrik powerCON I/O
- ▶ RDM enabled
- ▶ 5-mode DMX control plus standalone operation with master and slave modes
- ▶ 4 selectable dimming curves
- ▶ Colour temperature correction
- ▶ 3 preset temperatures of white: warm white, white, cool white
- ▶ Rugged die-cast aluminium housing



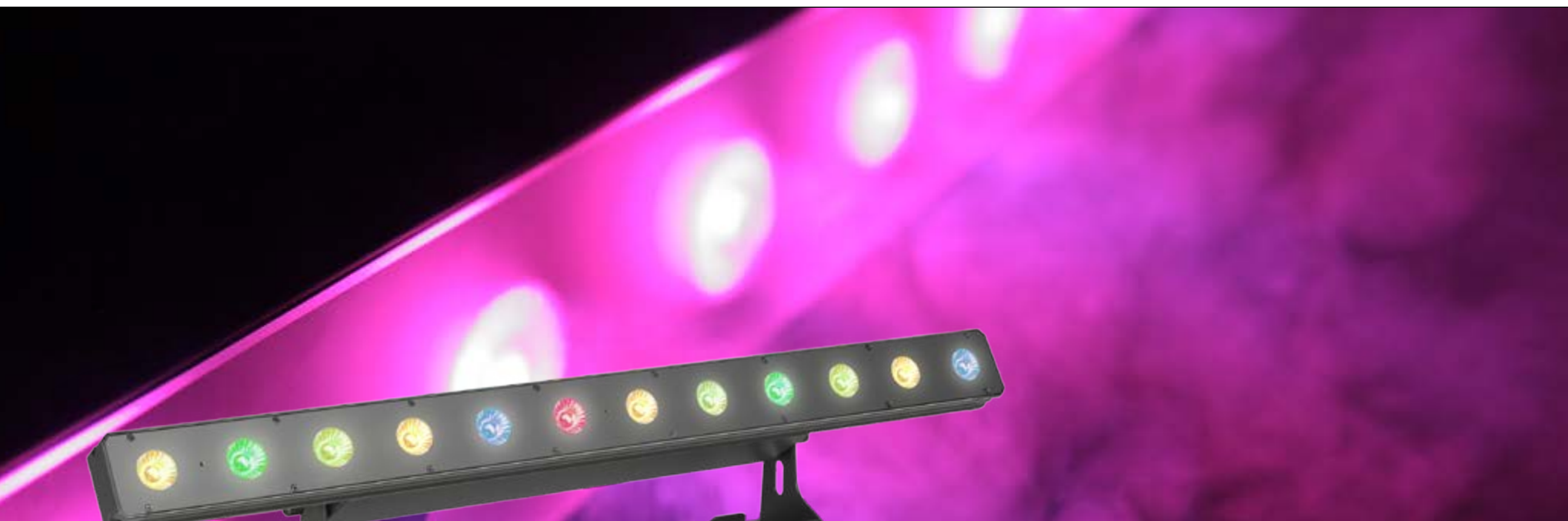
## LED BARS



### PIXBAR 650 CPRO / PIXBAR 450 CPRO PROFESSIONAL 8 X 30 W / 4 X 30 W COB LED BAR

The Cameo PixBar 650/450CPRO is a 53° beam width professional LED bar with 8 ultra bright 30 watt COB-LEDs for solid colour mixing with seamless transition. Highly efficient convection cooling and a 3,600 Hz refresh rate ensure absolutely noiseless operation and flicker free performance. The PixBar 650/450 CPRO is fully RDM compatible for bi-directional communication with a dedicated controller providing addressing, configuration and status reporting of the fixture. It is capable of standard DMX control in 5 modes and standalone, master or slave operation. The PixBar 450/650 CPRO also features autorun software, a built-in microphone for sound control and a backlit display with Mode, Enter, Up and Down keys for manual control. In addition to rich RGB colours and macros calibrated to the LEE filters standard the PixBar 450/650 CPRO provides colour temperature correction, 4 selectable dimming curves and single pixel control for impressive chase effects.

Model Name:	CLPIXBAR650CPRO	CLPIXBAR450CPRO
Product Type:	LED BAR	LED BAR
Type:	Washer	Washer
Colour Range:	RGB	RGB
Number of LEDs:	8	4
LED Type:	30 W COB	30 W COB
Refresh Rate:	3,600 Hz	3,600 Hz
Dispersion:	53°	53°
DMX Input:	XLR 3-pin male, XLR 5-pin male	XLR 3-pin male, XLR 5-pin male
DMX Output:	XLR 3-pin female, XLR 5-pin female	XLR 3-pin female, XLR 5-pin female
DMX Mode:	2-channel, 3-channel, 3-channel, 9-channel, 30-channel	2-channel, 3-channel 1, 3-channel 2, 9-channel, 18-channel
DMX Functions:	Pixel Control, 13 Auto-Modes, Sound Mode, Colour Macros, Dimmer, Strobe, Colour Temperature Correction	Pixel Control, 13 Auto-Modes, Sound Mode, Colour Macros, Dimmer, Strobe, Colour Temperature Correction
Standalone Modes:	14 Auto Modes, Sound Mode, Static, Strobe, Auto Run	14 Auto Modes, Sound Mode, Static, Strobe, Auto Run
Controls:	Mode, Enter, Value Up, Value Down	Mode, Enter, Value Up, Value Down
Indicators:	LC Display	LC Display
Power Supply	110 V AC - 240 V AC, 50 - 60 Hz	110 V AC - 240 V AC, 50 - 60 Hz
Power Consumption	250 W	130 W
Power Connector:	Neutrik PowerCon	Neutrik PowerCon
Cooling System:	Convection	Convection
Illuminance:	single LED 700 lx @ 1m	single LED 700 lx @ 1m
Housing Material:	die-cast aluminium	die-cast aluminium
Housing Colour:	Black	Black
Dimensions (without mounting bracket):	880 x 110 x 130 mm	440 x 110 x 130 mm



- ▶ Ultra bright 8 W Quad-LEDs
- ▶ LED single pixel control for stunning chase and pixel mapping effects
- ▶ Absolutely silent operation due to efficient convection cooling
- ▶ RGBW for perfect mixing of solid and pastel colours
- ▶ Flicker free
- ▶ Professional connectivity with 3 and 5-pin DMX and Neutrik powerCON I/O
- ▶ RDM enabled
- ▶ 7-mode DMX control plus standalone operation with master and slave modes
- ▶ Diffusion lens included for a smooth wash with minimum dazzle
- ▶ 4 selectable dimming curves
- ▶ Colour temperature correction
- ▶ 3 preset temperatures of white: warm white, white, cool white
- ▶ Rugged die-cast aluminium housing



## LED BARS



## PIXBAR 400 PRO / PIXBAR 300 PRO PROFESSIONAL 12 X 8 W / 6 X 8 W RGBW LED BAR

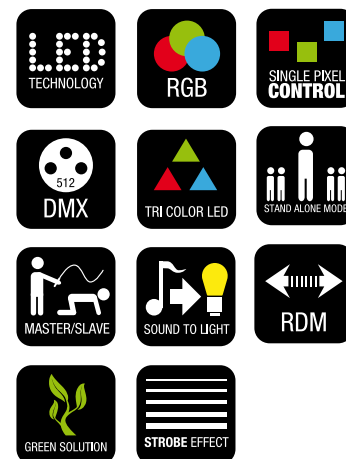
The Cameo PixBar 300 / 400 PRO is a professional LED bar with 12 ultra bright 8 watt Quad-LEDs and RDM compatibility enabling bi-directional communication. It provides vibrant RGBW colour mixes, 4 selectable dimming curves, macros calibrated to the LEE filters standard and single pixel control for stunning chase effects. Attached to a dedicated controller the RDM protocol enhancement allows convenient addressing, configuration and status monitoring of the PixBar 300/400 PRO. The fixture is also capable of standard DMX control in 7 modes and standalone, master or slave operation. It features autorun software, a built-in microphone for music control and a backlit display with Mode, Enter, Up and Down keys for manual control. With highly efficient convection cooling the PixBar 300/400 PRO is absolutely noiseless, and the 3,600 Hz refresh rate ensures flicker free performance. Additional features of the fixture are colour temperature correction and 3 temperatures of white: warm white, white, cool white.

Model Name:	PIXBAR400PRO	PIXBAR300PRO
Product Type:	LED BAR	LED BAR
Type:	Washer	Washer
Colour Range:	RGBW	RGBW
Number of LEDs:	12	6
LED Type:	8 W 4in1	4in1
Refresh Rate:	3,600 Hz	3,600 Hz
Dispersion:	18°	24°
DMX Input:	XLR 3-pin male, XLR 5-pin male	XLR 3-pin male, XLR 5-pin male
DMX Output:	XLR 3-pin female, XLR 5-pin female	XLR 3-pin female, XLR 5-pin female
DMX Mode:	2-channel, 4-1-channel, 4-2-channel, 6-channel, 10-channel, 50-channel, 54-channel	2-channel, 4-1-channel, 4-2-channel, 6-channel, 10-channel, 26-channel, 30-channel
DMX Functions:	Pixel Control, 14 Auto-Modes, Sound Mode, Colour Macros, Dimmer, Strobe, Colour Temperature Correction	Pixel Control, 14 Auto-Modes, Sound Mode, Colour Macros, Dimmer, Strobe, Colour Temperature Correction
Standalone Modes:	14 Auto Modes, Sound Mode, Static, Strobe	14 Auto Modes, Sound Mode, Static, Strobe
Controls:	Mode, Enter, Value Up, Value Down	Mode, Enter, Value Up, Value Down
Indicators:	LC Display	LC Display
Power Supply	110 V AC - 240 V AC, 50 - 60 Hz	110 V AC - 240 V AC, 50 - 60 Hz
Power Consumption	75W	35W
Power Connector:	Neutrik PowerCon	Neutrik PowerCon
Cooling System:	Convection	Convection
Illuminance:	single LED 550 lx @ 1m	single LED 550 lx @ 1m
Housing Material:	die-cast aluminium	die-cast aluminium
Housing Colour:	Black	Black
Dimensions (without mounting bracket):	900 x 117 x 70 mm	450 x 117 x 70 mm

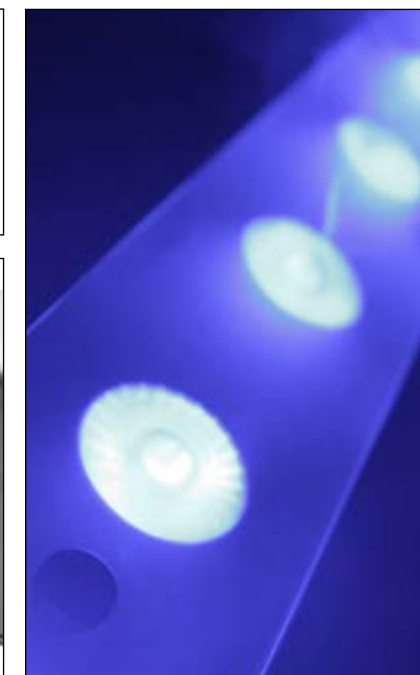




- ▶ Ultra bright 12 x 3 W TRI LEDs
- ▶ LED single pixel control for stunning chase and pixel mapping effects
- ▶ Absolutely silent operation due to efficient convection cooling
- ▶ Flicker free
- ▶ Professional connectivity with 3 and 5-pin DMX and Neutrik powerCON I/O
- ▶ RDM enabled
- ▶ 7-mode DMX control plus standalone operation with master and slave modes
- ▶ Diffusion lens included for a smooth wash with minimum dazzle
- ▶ 4 selectable dimming curves
- ▶ Colour temperature correction
- ▶ 3 preset temperatures of white: warm white, white, cool white
- ▶ Rugged die-cast aluminium housing



## LED BARS



## PIXBAR 200 PRO

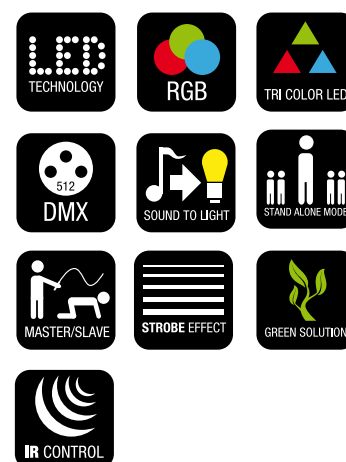
### PROFESSIONAL 12 X 3 W TRI LED BAR

The Cameo PixBar 200 PRO is a professional LED bar with 12 ultra bright 3 watt TRI-LEDs and RDM compatibility enabling bi-directional communication. It provides vibrant RGB colour mixes, 4 selectable dimming curves, macros calibrated to the LEE filters standard and single pixel control for stunning chase effects. Attached to a dedicated controller the RDM protocol enhancement allows convenient addressing, configuration and status monitoring of the PixBar 200 PRO. The fixture is also capable of standard DMX control in 7 modes and standalone, master or slave operation. It features autorun software, a built-in microphone for music control and a backlit display with Mode, Enter, Up and Down keys for manual control. With highly efficient convection cooling the PixBar 200 PRO is absolutely noiseless, and the 3,600 Hz refresh rate ensures flicker free performance. Additional features of the fixture are colour temperature correction and 3 temperatures of white (warm white, white, cool white).

Model Name:	PIXBAR200PRO
Product Type:	LED BAR
Type:	Washer
Colour Range:	RGB
Number of LEDs:	12
LED Type:	3W TRI
Refresh Rate:	3,600 Hz
Dispersion:	16°
DMX Input:	XLR 3-pin male, XLR 5-pin male
DMX Output:	XLR 3-pin female, XLR 5-pin female
DMX Mode:	2-channel, 3-1-channel, 3-2-channel, 5-channel, 9-channel, 38-channel, 42-channel
DMX Functions:	Pixel Control, 14 Auto-Modes, Sound Mode, Colour Macros, Dimmer, Strobe, Colour Temperature correction
Standalone Modes:	14 Auto-Modes, Sound Mode, Static, Strobe
Controls:	Enter, Value Up, Value Down, Mode
Indicators:	LC Display
Operating Voltage:	110 V AC - 240 V AC / 50 - 60 Hz
Power Consumption:	60 W
Power Connector:	Neutrik PowerCon
Housing Material:	die-cast aluminium
Cooling System:	Convection
Illuminance:	Single LED 700 lx @ 1m
Housing Colour:	Black
Dimensions (without mounting bracket):	900 x 117 x 70 mm



- ▶ 12 ultra bright 3 W Tri-LEDs
- ▶ 3 individually controllable quartets of LEDs
- ▶ Includes IR remote control with batteries
- ▶ Convection cooling for noiseless operation
- ▶ 5 mode DMX control plus master, slave and standalone modes
- ▶ Built-in microphone for sound control
- ▶ Backlit display with 4 function keys for easy manual operation
- ▶ IEC mains input and output for serial connection
- ▶ Rugged metal enclosure with roping eye and universal mounting angles
- ▶ Available in black or white



## LED BARS



## TRIBAR 200 IR

### 12 X 3 W **TRI LED BAR** IN BLACK OR WHITE HOUSING WITH IR REMOTE CONTROL

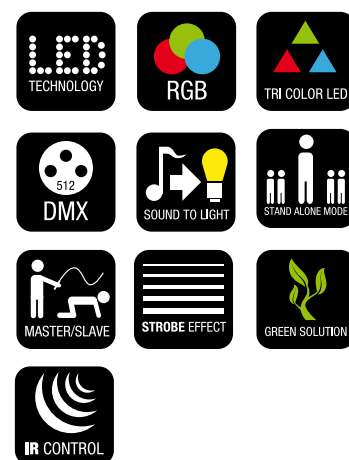
Featuring 12 ultra bright 3W Tri-LEDs, convection cooling for noiseless operation and 5 DMX modes the Cameo TriBar 200 IR is just right for versatile lighting design. The LEDs are individual controllable in quartets. The RGB bar sports a 20° beam angle, standalone, master and slave modes with 12 autorun programs and a built-in microphone for music control. A backlit display with 4 function keys and the IR remote control allow convenient manual operation. The rugged metal enclosure is equipped with 3-pin DMX and IEC mains inputs and outputs for easy daisy chaining and adjustable mounting angles, power consumption is remarkably low at 50 watts. The Cameo TriBar 200 IR is available in black or white.

Model Name:	CLTRIBAR200IR (black housing) / CLTRIBAR200IRWH (white housing)
Product Type:	LED BAR
Type:	Washer
Colour Range:	RGB
Number of LEDs:	12
LED Type:	3W TRI Colour
Dispersion:	20°
DMX Input:	XLR 3-pin male
DMX Output:	XLR 3-pin female
DMX Mode:	2-channel, 3-1 channel, 3-2 channel, 9-channel, 12-channel
DMX Functions:	Master Dimmer, Colour Macros, 12 Programs, Sound Control, Strobe, 3 Sections RGB
Standalone Modes:	Colour Macros, 12 Programs, Sound Control, Strobe, Auto Mode, Slave Mode
Controls:	Enter, Value Up, Value Down, Mode
Indicators:	LED Display
Operating Voltage:	100 V AC - 240 V AC / 50 - 60 Hz
Power Consumption:	50W
Power Connector:	IEC Power Connector male, IEC Power Connector female
Housing Material:	Metal
Cooling System:	Convection
Illuminance:	2,340 lx @ 1m
Housing Colour:	Black / White
Dimensions (without mounting bracket):	1,022 x 66 x 65 mm





- ▶ 6 ultra bright 3W Tri-LEDs
- ▶ 3 individually controllable quartets of LEDs
- ▶ Includes IR remote control with batteries
- ▶ Convection cooling for noiseless operation
- ▶ 5 mode DMX control plus master, slave and standalone modes
- ▶ Built-in microphone for sound control
- ▶ Backlit display with 4 function keys for easy manual operation
- ▶ IEC mains input and output for serial connection
- ▶ Rugged metal enclosure with roping eye and universal mounting angles
- ▶ Available in black or white



## LED BARS

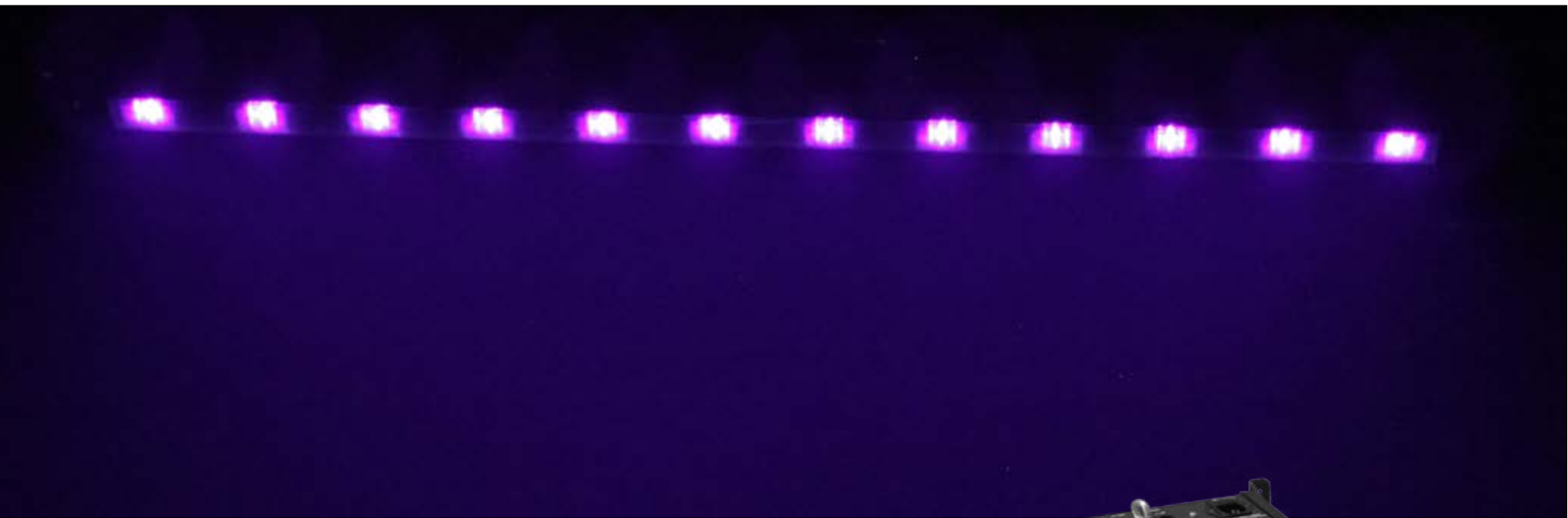


## TRIBAR 100 IR

### 6 X 3 W **TRI LED BAR** IN BLACK OR WHITE HOUSING WITH IR REMOTE CONTROL

Featuring 6 ultra bright 3W Tri-LEDs, convection cooling for noiseless operation and 5 DMX modes the Cameo TriBar 100 IR is just right for versatile lighting design. The LEDs are individual controllable in pairs. The RGB bar sports a 20° beam angle, standalone, master and slave modes with 12 autorun programs and a built-in microphone for music control. A backlit display with 4 function keys and the IR remote control allow convenient manual operation. The rugged metal housing is equipped with 3-pin DMX and IEC mains inputs and outputs for easy daisy chaining and adjustable mounting angles, power consumption is remarkably low at 30 watts. The Cameo TriBar 100 IR is available in black or white.

Model Name:	CLTRIBAR100IR (black housing) / CLTRIBAR100IRWH (white housing)
Product Type:	LED BAR
Type:	Washer
Colour Range:	RGB
Number of LEDs:	6
LED Type:	3W TRI Colour
Dispersion:	20°
DMX Input:	XLR 3-pin male
DMX Output:	XLR 3-pin female
DMX Mode:	2-channel, 3-1 channel, 3-2 channel, 9-channel, 12-channel
DMX Functions:	Master Dimmer, Colour Macros, 12 Programs, Sound Control, Strobe, 3 Sections RGB
Standalone Modes:	Colour Macros, 12 Programs, Sound Control, Strobe, Auto Mode, Slave Mode
Controls:	Enter, Value Up, Value Down, Mode
Indicators:	LED Display
Operating Voltage:	100 V AC - 240 V AC / 50 - 60 Hz
Power Consumption:	30W
Power Connector:	IEC Power Connector male, IEC Power Connector female
Housing Material:	Metal
Cooling System:	Convection
Illuminance:	2,340 lx @ 1m
Housing Colour:	Black / White
Dimensions (without mounting bracket):	522 x 66 x 65 mm



## UVBAR 200 IR

### 12 X 3 W **UV LED BAR** WITH IR REMOTE CONTROL

The Cameo UVBar 200 IR is a blacklight bar with 12 super bright 3W ultraviolet LEDs, 65° beam angle and convection cooling for noiseless operation. It features DMX control, standalone, master and slave modes with dimmer and strobe effects and a built-in microphone for sound activation. For manual operation the UVBar 200 comes with a convenient handheld infrared control. The rugged metal enclosure is equipped with 3-pin DMX and IEC mains inputs and outputs for easy daisy chaining and adjustable mounting angles.

- ▶ UV bar with convenient infrared remote control
- ▶ 12 brilliant 3 watt UV LEDs with 65° beam angle
- ▶ Convection cooling for noiseless operation
- ▶ DMX control, master, slave and standalone modes
- ▶ Strobe and dimming effects
- ▶ Stiff, rugged metal enclosure with 2 roping eyes
- ▶ Comes with universal mounting angles for optimum alignment



Model Name:	CLUVBAR200IR
Product Type:	LED BAR
Type:	Washer
Colour Spectrum:	UV
Number of LEDs:	12
LED Type:	3W UV
Refresh Rate:	3,000 Hz
Dispersion:	65°
DMX Input:	XLR 3-pin male
DMX Output:	XLR 3-pin female
DMX Mode:	2-channel, Dimmer, Strobe
DMX Functions:	Master, Dimmer, Strobe
Standalone Modes:	Master Dimmer, Strobe, Sound Control
Controls:	Enter, Value Up, Value Down, Mode
Indicators:	LED Display
Operating Voltage:	100 V AC - 240 V AC / 50 - 60 Hz
Power Consumption:	35W
Power Connector:	IEC Power Connector male, IEC Power Connector female
Housing Material:	Metal
Cooling System:	Convection
Housing Colour:	Black
Dimensions (without mounting bracket):	1,022 x 66 x 67 mm





**LED BAR**  
252 X 10 MM **LED RGBA COLOUR BAR** IN BLACK OR WHITE HOUSING

The Cameo CLBARL10RGBA/WH is a slim, versatile light bar: it can be used in clubs and discos, stage design and interior decorating, even in residential spaces. It has 252 powerful, long-life 10 mm LEDs in the colours red, green, blue, and amber which ensure brilliant, even lighting with the basic colours and any desired mixed colours with a defined beam angle of 30°. The bar can be locked in position using the two mounting brackets and has two eyebolts for mounting and securing. In- and output power and DMX connectors on both ends make it possible to control multiple Cameo light bars in series. Moreover, it impresses with a low power consumption of 40W and minimal generation of heat.

- ▶ 252 powerful, long-life 10 mm RGBA LEDs
- ▶ RGBA for warm, rich colour mixing
- ▶ Operated via DMX, in master/slave mode or standalone mode
- ▶ Can be operated in one block or separately in 4 equal blocks
- ▶ Integrated microphone for sound control
- ▶ Simple to operate using the four buttons and LED display
- ▶ Universal mounting brackets included
- ▶ Rugged slim metal housing



WATCH THE DEMO-VIDEO:



Model Name:	CLBARL10RGBA (black housing) / CLBARL10RGBAWH (white housing)
Product Type:	Light bar
Type:	Washer
Colour Range:	RGBA
Number of LEDs:	252
LED Type:	10 mm
Beam Angle:	30°
DMX Input:	XLR 3-pin male
DMX Output:	XLR 3-pin female
DMX Mode:	4-channel, 2-channel, 19-channel, 3-channel, 6-channel
DMX Functions:	Master Dimmer, Colour Macro, Colour Jump, Colour Fade, Strobe, Sound Control, RGBA
Standalone Modes:	Static Colour, Auto Run, Sound Control, Slave Mode, Colour Jump, 10 Programs, Colour Fade
Controls:	Mode, Enter, Value Up, Value Down
Indicators:	LC Display
Power Supply	100 V AC - 250 V AC
Power Consumption	40W
Power Connector:	IEC Power Connector
Housing Material:	Metal
Housing Colour:	White
Dimensions (without mounting bracket):	1,018 x 63 x 87 mm



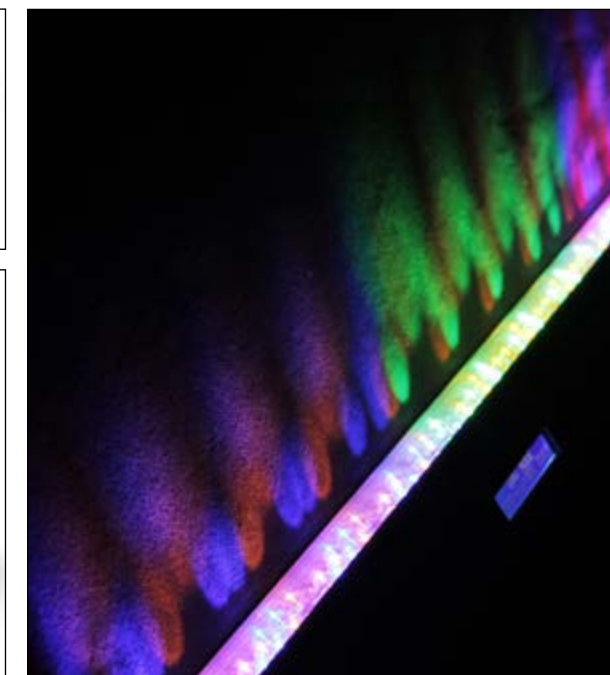
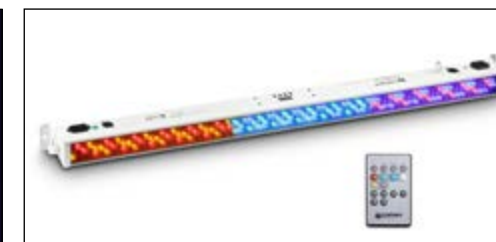
- ▶ 252 luminous, long-lasting 10 mm RGB LEDs
- ▶ RGB for warmer, richer colours
- ▶ Operating in one block or separately in 3 equal blocks
- ▶ Supplied with IR remote control
- ▶ Operation via DMX, in Master/Slave mode or as a single projector
- ▶ Built-in microphone for sound-control mode
- ▶ Simple to operate using the four buttons and LED display
- ▶ Rugged metal housing with universal mounting brackets
- ▶ Power input and output jacks for serial connection



WATCH THE DEMO-VIDEO:



## LED BARS



## LED BAR IR

252 X 10 MM **LED RGB COLOUR BAR** IN BLACK OR WHITE HOUSING WITH IR REMOTE CONTROL

The Cameo CLBARL10RGBIR is a super slim washer with RGB colour mixing, a 30° beam angle and comfortable IR remote control. With a total of 252 long-lasting and energy-efficient 10 mm LEDs the ultra bright light bar with a robust metal housing provides effective, rich colour wallpapers in bars, discos and on the stage. The CLBARL10RGBIR can be operated via 5 DMX modes, as master, slave and standalone or in one block or separately in 3 equal blocks. 12 programs and the built-in microphone for music control ensure functionality, the manual setting is very easily done on a bright LED display using 4 buttons. With 3-pin XLR-connectors for input and loop-through of the DMX-signal, as well as IEC-sockets for the power supply and output the Cameo CLBARL10RGBIR is equipped for serial connection. Universal mounting brackets offer extensive possibilities for mounting and alignment. Also available in white (CLBARL10RGBIRWH), IR remote control is included.

Model Name:	CLBARL10RGBIR (black housing), CLBARL10RGBIRWH (white housing),
Product Type:	Light Bar
Type:	Washer
Colour Range:	RGB
Number of LEDs:	252
LED Type:	10 mm
Dispersion:	30°
DMX Input:	XLR 3-pin male
DMX Output:	XLR 3-pin female
DMX Mode:	2-channel, 3-channel 1, 3-channel 2, 9-channel, 12-channel
DMX Functions:	Program, RGB, Sound Control, Colour Macro, Strobe
Standalone Modes:	Sound Control, 12 Programs, Colour Macro, Auto Run, Slave Mode
Controls:	Mode, Enter, Value Up, Value Down, IR-Remote
Indicators:	LED Display
Power Supply:	100 V AC - 240 V AC, 50 - 60 Hz
Power Consumption:	40W
Power Connector:	IEC Power Connector Female, IEC Power Connector Male
Housing Material:	Metal
Housing Colour:	Black, White
Dimensions (without mounting bracket):	1,018 x 63 x 87 mm





**STROBE 2**  
**EXTREMELY POWERFUL STROBE WITH**  
**6X10W WHITE COB LEDs**

The Cameo CLSTROBE2 is a high-power LED strobe light with six 10-Watt white COB LEDs and 80° beam angle for large area coverage. It allows for DMX, slave and standalone operation with strobe, dimmer and sound activation modes. The flash rate is adjustable from 1 to 20 flashes per second for an intense strobe effect. Mode, Value Up and Down keys and a 3-digit LED display permit easy manual control. The compact lightweight CLSTROBE2 is easily portable, and an adjustable bracket provides multiple mounting options.

- ▶ Extremely Powerful 6 x 10W White COB LEDs
- ▶ Low power consumption
- ▶ Flash-rate adjustable (1-20 flashes/sec)
- ▶ Wide beam angle
- ▶ Operated via DMX, in master/slave mode or standalone mode
- ▶ Integrated microphone for sound control
- ▶ Simple to operate using the three buttons and LED display
- ▶ Universal mounting bracket included
- ▶ Compact, sturdy metal housing



WATCH THE DEMO-VIDEO:



Model Name:	CLSTROBE2
Product Type:	Strobe
Type:	LED Strobe
Colour Range:	White
Number of LEDs:	6
LED Type:	10W White COB
Beam Angle:	80°
Flash Rate:	1-20 Flashes /sec adjustable
DMX Input:	XLR 3-pin
DMX Output:	XLR 3-pin
DMX Mode:	2-channel
DMX Functions:	Flash Rate, Dimmer
Standalone Modes:	Flash Rate, Dimmer, Sound Mode, Slave
Controls:	Mode, Value Up, Value Down
Indicators:	3 Digit LED Display
Connectors:	Analog On- and Output 6.3 mm Jack
Power Connector:	Power Cord with Safety Plug (Type E / CEE 7/7)
Housing Material:	Metal
Housing Colour:	Black
Dimensions (without mounting bracket):	380 x 95 x 165 mm



**STROBE 1**  
**HIGH QUALITY STROBE WITH 3X3.5 W WHITE COB LEDs**

The Cameo CLSTROBE1 is a high-quality LED strobe light with three 3.5-Watt white COB LEDs and 80° beam angle for large area coverage. It allows for DMX, slave and standalone operation with strobe, dimmer and sound activation modes. The flash rate is adjustable from 1 to 20 flashes per second for an intense strobe effect. Mode, Value Up and Down keys and a 3-digit LED display permit easy manual control. The compact lightweight CLSTROBE1 is easily portable, and an adjustable bracket provides multiple mounting options.

- ▶ Powerful 3 x 3,5W White COB LEDs
- ▶ Low power consumption
- ▶ Flash-rate adjustable (1-20 flashes/sec)
- ▶ Wide beam angle
- ▶ Operated via DMX, in master/slave mode or standalone mode
- ▶ Integrated microphone for sound control
- ▶ Simple to operate using the three buttons and LED display
- ▶ Universal mounting bracket included
- ▶ Compact, sturdy metal housing

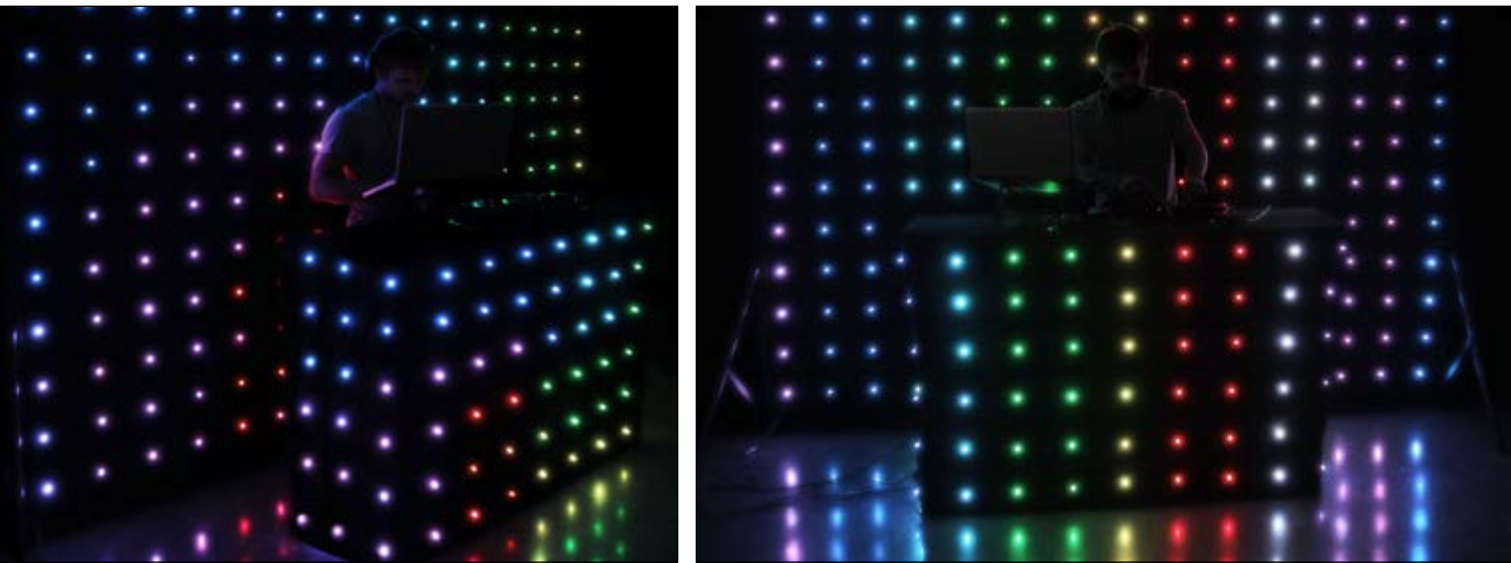


WATCH THE DEMO-VIDEO:



Model Name:	CLSTROBE1
Product Type:	Strobe
Type:	LED Strobe
Colour Range:	White
Number of LEDs:	3
LED Type:	3.5W White COB
Beam Angle:	80°
Flash Rate:	1-20 Flashes/sec adjustable
DMX Input:	XLR 3-pin
DMX Output:	XLR 3-pin
DMX Mode:	2-channel
DMX Functions:	Flash Rate, Dimmer
Standalone Modes:	Flash Rate, Dimmer, Sound Mode, Slave
Controls:	Mode, Value Up, Value Down
Indicators:	3 Digit LED Display
Connectors:	Analog On- and Output 6.3 mm Jack
Power Connector:	Power Cord with Safety Plug (Type E / CEE 7/7)
Housing Material:	Metal
Housing Colour:	Black
Dimensions (without mounting bracket):	380 x 95 x 165 mm





LED EFFECTS

The Mobile LED curtains LED DROPIX 66 and LED DROPIX 176 from Cameo generate 30 impressive matrix effects with RGB colour mixing and a wide viewing angle. The particularly bright and durable tri-colour SMD LEDs are arranged at 18 cm intervals on opaque Molton fabric with eyelets all around for easy suspension and are certified according to DIN4102 B1. The animated lighting effects provide the perfect back-drop for bands, clubs and mobile DJs, and can be controlled via the corresponding controller, 8 DMX channels, external sound sources and the integrated automatic control. The professional LED curtains can be easily combined and operated synchronously. They are supplied with connection and power cord, controller and reusable cable ties in a handy carrying bag and are also available as a set (Art. No. CLDROPIXSET).



LED DROPIX SET

Set consisting of 2 professional LED curtains with matrix effects, controller and extension cable

Model Name:	CLDROPIXSET
Product Type:	LED Effects Set
Type:	Matrix LED curtain
Other features:	Travel Bag included



WATCH THE DEMO-VIDEO:



LED DROPIX EXT 5  
Extension Cable 5 m  
for **CLDROPIX66** and  
**CLDROPIX176**



LED DROPIX 176

Professional LED curtain with matrix effects 3.1 m x 2 m

Model Name:	CLDROPIX176
Product Type:	LED Effects Set
Type:	Matrix LED curtain
Other features:	Travel Bag included



LED DROPIX 66

Professional LED curtain with matrix effects 2 m x 1.3 m

Model Name:	CLDROPIX66
Product Type:	LED Effects Set
Type:	Matrix LED curtain
Other features:	Travel Bag included

DROPIX LED Curtain – LED DROPIX 66 / LED DROPIX 176

Colour spectrum:	RGB
Number of LEDs:	66 / 176
LED type:	SMD 3in1 LED
Curtain Fabric:	B1 curtain fabric, flame resistant according to DIN 4102-1, hemmed curtain fabric with eyelets on all 4 sides, eyelet interval 20 cm
Curtain Colour:	black, opaque
Curtain Dimensions (W x H):	2 m x 1.3 m, 3.1 x 2 m
Curtain Weight:	1.8 kg / 4.5 kg
Curtain Accessories:	1 set of replacement LEDs, 1 set of reusable cable ties for mounting, 1 replacement cable set

CLDROPIX Controller

DMX Input:	XLR 3-pin male
DMX Output:	XLR 3-pin female
Output for Curtain:	XLR 4-pin female (LED DROPIX 176), XLR 4-pin female (LED DROPIX 66)
DMX Functions:	Strobe, RGB, Master Dimmer, 30 Matrix Auto Programs
DMX Mode:	3-channel, 8-channel, 5-channel
Standalone Functions:	30 Matrix Sound Programs, 30 Matrix Auto Programs, Master/Slave Mode
Controls:	Microphone Sensitivity, Enter, Down, Power On / Off, Mode, Up
Indicators:	Backlit, 2-line LC Display
Power Connector:	IEC Power Connector male
Operating Voltage:	220 V - 240 V AC / 50 Hz
Power consumption:	50W
Fuse:	F2AL / 250 V
Housing material:	Metal
Cabinet colour:	Black
Housing Cooling:	Convection
Dimension (W x H x D):	246 x 55 x 150 mm
Controller Accessories:	Power Cord







## STORM

### 5X3W 3IN1 RGBWA **DERBY STROBE AND GRATING LASER** LIGHTING EFFECT

The STORM from Cameo combines a Derby effect, laser and strobe in one projector. It can be controlled via 10 DMX channels, automatically or by music and used as master or slave. Razor-sharp laser beams in red and green, up to 30 ultra bright strobe lights per second and the RGBWA Derby effect combine to ensure an animated lighting design aimed to impress. The STORM features an easy to read display with function buttons and LEDs to show operating modes, a key switch to prevent unauthorised operation, remote shutdown and IEC power input and output. The comfortable adjustable bracket and a locking ring allow for reliable assembly of the projector.

Model Name:	CLSTORM	DMX Input:	XLR 3-pin male, Optional Remote Switch
Product Type:	LED / Laser Effect	DMX Output:	XLR 3-pin female
Type:	3-in-1 LED Projector	DMX Mode:	10-channel
Colour Spectrum Derby Effect:	RGBWA	DMX Functions:	Derby, Auto Programs, Sound Programs, Laser, Strobe
Number of LEDs Derby Effect:	5	Standalone Modes:	Sound Programs, Auto Programs
LED Type Derby Effect:	3W	Controls:	Up, Down, Mode Enter
Dispersion Derby Effect:	68°	Display:	4-digit LED Display
Colour Spectrum Laser Effect:	green LED (532 nm), red LED (650 nm)	Power Connector:	IEC Power Input and Output
Number of Diodes Laser Effect:	1 x red, 1x green	Operating Voltage:	100 V AC - 240 V AC, 50 - 60 Hz
Type of Diodes Laser Effect:	red 100 mW, green 50 mW (DPSS Laser)	Power Consumption:	50W
Beam Angle Laser Effect:	74 °	Fuse:	T1.6AL / 250V
Laser Class Laser Effect:	3R	Housing Material:	Metal
Laser Shutdown (Safety Function):	Remote Connection, Connection for External Emergency Stop Switch	Cabinet Colour:	Black
Colour Spectrum Strobe:	White	Housing Cooling:	Fan
Number of LEDs Strobe:	8	Dimensions (without mounting bracket):	250 x 250 x 170 mm
LED Type Strobe:	1W	Other Features:	Security Lock Slot, Optional Remote Switch, Adjustable Mounting Bracket Included
Beam Angle Strobe:	8°		

- ▶ 3-in-1 LED Projector
- ▶ 5 x 3 W RGBWA Derby Effect
- ▶ 150 mW Grating Laser (red 100 mW, green 50 mW)
- ▶ 8 x 1 W Strobe LEDs
- ▶ 10 DMX Channels, sound and automatic control
- ▶ Master and slave operation
- ▶ Low power consumption
- ▶ Sturdy metal housing
- ▶ Universal mounting bracket included



WATCH THE DEMO-VIDEO:







# MOONFLOWER HP

32W 4 IN 1 RGBW **HIGH POWER LED** EFFECT

The Cameo MOONFLOWER HP produces over 150 sharp, closely focused light beams for a stunning and space-filling lighting effect. A particularly powerful and durable 32 Watt Quad LED provides natural RGBW colours with high intensity. The convection- cooled device works almost noiselessly, and the usage time is virtually unlimited thanks to extremely low heat generation. The MOONFLOWER HP can be operated in 2 or 5-channel DMX mode with features such as dimmer, strobe and rotation effects or as master, slave and standalone. To this end, automated programs and a microphone for sound control are integrated; the operation is simple and convenient via four buttons and a bright LED display. The sturdy black metal housing with an adjustable universal mounting bracket is equipped with 3-pin XLR connectors for input and looping of the DMX signal; IEC input and output sockets allow for parallel power supply of daisy chained devices. The Cameo MOONFLOWER HP is characterised not least by a low power consumption and works with all mains voltages from 100 to 240 volts.

- ▶ 1 x 32 Watt RGBW 4 in 1 High Power LED
- ▶ Low power consumption
- ▶ Power in/out for daisy chaining
- ▶ Operated via DMX, in master/slave mode or standalone mode
- ▶ Integrated microphone for sound control
- ▶ Simple to operate using the four buttons and LED display
- ▶ Rugged metal housing
- ▶ Universal mounting bracket included



WATCH THE DEMO-VIDEO:



Model Name:	CLFLOWERHP
Product Type:	LED Effect Light
Type:	Moonflower
Colour Range:	RGBW
Number of LEDs:	1
LED Type:	32 W 4 in 1
DMX Input:	XLR 3-pin male
DMX Output:	XLR 3-pin female
DMX Mode:	2-channel, 5-channel
DMX Functions:	Strobing Slow & Fast, Colour Selection, No Rotation, Clockwise Fast & Slow, Counter Clockwise Fast & Slow, Dimmer
Standalone Modes:	Auto Run, Sound Control
Controls:	Mode, Enter, Value Up, Value Down
Indicators:	LED Display
Operating Voltage:	100 V AC - 240 V AC, 50 - 60 Hz
Power Consumption	40 W
Power Connector:	IEC Power Connector Male, IEC Power Connector Female
Housing Material:	Metal
Housing Colour:	Black
Cooling:	Convection
Dimensions (without mounting bracket):	250 x 240 x 177 mm



## SUPERFLY HP

### 5X10W RGBWA HIGH POWER LED EFFECT

The Cameo SUPERFLY HP features 5 durable, 10 Watt LEDs in the colours red, green, blue, white and amber and 24 precision lenses for an impressive Derby effect. About 40 razor-sharp edged, wide beams cut through the room with intense colours and high luminosity. Thanks to efficient convection cooling, the device operates almost noiselessly, and the minimal heat generation allows for unrestricted operating times. The SUPERFLY HP can be controlled via DMX in 2- or 5-channel mode, and features functions such as rotation, strobe and dimmer to support a vibrant, dynamic lighting design. The unit is also equipped with automated programs, and a microphone for music control and is suitable for use as master, slave or standalone. Four buttons and a bright LED display are used for comfortable operation. The sturdy black metal housing of the SUPERFLY HP has an adjustable universal mounting bracket and a locking ring. 3-pin XLR connectors as DMX input and output as well as IEC-power input and output jacks allow for easy daisy chaining of devices.

- ▶ 5x10W RGBWA High Power LEDs
- ▶ Low power consumption
- ▶ Power in/out for daisy chaining
- ▶ Operated via DMX, in master/slave mode or standalone mode
- ▶ Integrated microphone for sound control
- ▶ Simple to operate using the four buttons and LED display
- ▶ Rugged metal housing
- ▶ Universal mounting bracket included



WATCH THE DEMO-VIDEO:



Model Name:	CLSUPERFLYHP
Product Type:	LED Effect Light
Type:	Derby
Colour Range:	RGBWA
Number of LEDs:	5
LED Type:	10 W RGBWA
DMX Input:	XLR 3-pin male
DMX Output:	XLR 3-pin female
DMX Mode:	2-channel, 5-channel
DMX Functions:	Strobing Fast & Slow, Colour Selection, No Rotation, Clockwise Fast & Slow, Counter Clockwise Fast & Slow, Dimmer
Standalone Modes:	Auto Run, Sound Control
Controls:	Mode, Enter, Value Up, Value Down
Indicators:	LED Display
Operating Voltage:	100 V AC - 240 V AC, 50 - 60 Hz
Power Consumption:	50 W
Power Connector:	IEC Power Connector Male, IEC Power Connector Female
Housing Material:	Metal
Housing Colour:	Black
Cooling:	Convection
Dimensions (without mounting bracket):	360 x 225 x 300 mm





# SUNBEAM

## 1 X 8W RGBA AND 1 X 8W RGBW LED EFFECT

The Cameo SUNBEAM is an impressive Derby light effect with two 8 Watt Quad LEDs for bright RGBW and RGBA mixtures. 48 precision lenses project multicoloured light beams with extremely sharp edges and a room-filling effect. Thus strobe and rotation functions produce spectacular lively light patterns with different speeds. The SUNBEAM can be controlled via 2- or 5-channel DMX modes, and operated with the integrated programs or sound controlled by the built-in microphone in master, slave or standalone modes. The device is easy to use with four function buttons and a bright LED display. Through effective convection cooling, the robust metal housing does not generate any noticeable heat, and the Cameo SUNBEAM can be fully operated almost noiselessly. 3-pin XLR connectors as DMX input and looping as well as IEC-power supply and output jacks allow for easy daisy chaining of devices. The adjustable mounting bracket and a locking ring complete the equipment.

Model Name:	CLSUNBEAM
Product Type:	LED Effect Light
Type:	Derby
Colour Range:	RGBWA
Number of LEDs:	2
LED Type:	8 W RGBW, 8W RGBA
DMX Input:	XLR 3-pin male
DMX Output:	XLR 3-pin female
DMX Mode:	2-channel, 5-channel
DMX Functions:	Strobing Fast & Slow, Colour Selection, No Rotation, Clockwise Fast & Slow, Counter Clockwise Fast & Slow, Dimmer
Standalone Modes:	Auto Run, Sound Control
Controls:	Mode, Enter, Value Up, Value Down
Indicators:	LED Display
Operating Voltage:	100 V AC - 240 V AC, 50 - 60 Hz
Power Consumption	40 W
Power Connector:	IEC Power Connector Male, IEC Power Connector Female
Housing Material:	Metal
Housing Colour:	Black
Cooling:	Convection
Dimensions (without mounting bracket):	357 x 204 x 340 mm

- ▶ 1 x 8W RGBW and 1 x 8W RGBA High Power LEDs
- ▶ Low power consumption
- ▶ Power in/out for daisy chaining
- ▶ Operated via DMX, in master/slave mode or standalone mode
- ▶ Integrated microphone for sound control
- ▶ Simple to operate using the four buttons and LED display
- ▶ Rugged metal housing
- ▶ Universal mounting bracket included



WATCH THE DEMO-VIDEO:





## MOONFLOWER

### 9W **TRI COLOUR LED** EFFECT LIGHT

An LED effect that makes a huge impression! Featuring a 9-Watt TRI colour LED as the light source and six lenses, the CLMOVER1 creates razor-sharp light beams that tear through the room. Colourful, fast and bright and always playing to the right beat thanks to the integral microphone and sound control function. They are actuated either via DMX protocol (3-pin XLR) with four control channels, in master/slave mode or in standalone mode via the sound control. The CLMOVER1 is quick and easy to operate using the four push buttons and an LED display. Its power consumption is a mere 30 Watts.

- ▶ 9W Ultra High Power TRI RGB LED
- ▶ Low power consumption
- ▶ Power in/out for daisy chaining
- ▶ Operated via DMX, in master/slave mode or standalone mode
- ▶ Integrated microphone for sound control
- ▶ Simple to operate using the four buttons and LED display
- ▶ Universal mounting bracket included
- ▶ Sturdy metal housing



WATCH THE DEMO-VIDEO:



Model Name:	CLMOVER1
Product Type:	LED Effect Light
Type:	Moonflower
Colour Range:	RGB
Number of LEDs:	1
LED Type:	9 W TRI Colour
DMX Input:	XLR 3-pin male
DMX Output:	XLR 3-pin female
DMX Mode:	4-channel
DMX Functions:	Colour Selection, No Rotation, Clockwise Fast & Slow, Counter Clockwise Fast & Slow, Strobing Slow & Fast, Dimmer
Standalone Modes:	Auto Run, Sound Control
Controls:	Mode, Enter, Value Up, Value Down
Indicators:	LED Display
Power Supply	100 V AC - 240 V AC, 50 - 60 Hz
Power Consumption	30 W
Power Connector:	IECC Euro Power Socket female
Housing Material:	Metal
Housing Colour:	Black
Dimensions (without mounting bracket):	250 x 177 x 240 mm
Features:	6 lenses for razor sharp beams





FLUIDS

There are different versions of Cameo Fluids for professional fog machines, haze machines, snow machines and as bubble fluid for bubble machines. The Fine Fluid creates haze effects with conventional fog machines, which can be easily cleaned with our Cleaning Fluid. Cameo fog fluids are characterised by an excellent reflective behaviour, are not harmful to health and are biodegradable.

**MADE IN GERMANY!**

**BIODEGRADABLE**  
READY FOR USE



**HAZE FLUID 10L/5L**  
FOR FINE FOG DENSITY AND  
LONG STANDING TIME



**HEAVY FLUID 10L/5L**  
FOG FLUID WITH VERY HIGH DENSITY  
AND VERY LONG STANDING TIME



**FAST FLUID 5L**  
FOG FLUID WITH VERY HIGH DENSITY  
AND VERY SHORT STANDING TIME



**FINE FLUID 5L**  
HAZE EFFECT FOG FLUID WITH VERY HIGH  
DENSITY AND VERY LONG STANDING TIME



**XTRA HEAVY FLUID  
10L/5L**  
FOG FLUID VERY HIGH DENSITY AND  
EXTREME LONG STANDING TIME



**DJ FLUID 10L/5L**  
FOG FLUID WITH MEDIUM DENSITY  
AND MEDIUM STANDING TIME



**SNOW FLUID 5L**  
SPECIAL FLUID FOR SNOW MACHINES  
FOR THE PRODUCTION OF FOAM



**BUBBLE FLUID 5L**  
SPECIAL FLUID FOR GENERATING  
SOAP BUBBLES



**CLEANING FLUID 250 ML**  
SPECIAL FLUID FOR CLEANING FOG MACHINES



- ▶ Professional 8-way DMX splitter / booster
- ▶ Chassis 1U 19" rack-mount enclosure
- ▶ DMX INPUT: 1 x XLR (5-pin / 3-pin) front panel, 1 x XLR (5-pin) back panel
- ▶ DMX THRU: 1 x XLR (5-pin / 3-pin) front panel, 1 x XLR (5-pin) back panel
- ▶ 8 electrically isolated XLR (5-pin / 3-pin) outputs on the back
- ▶ DMX status indicator per channel
- ▶ Power status indicator
- ▶ Switchable 120 Ohm terminating resistor for the DMX THRU output jack



# SB8.5 / SB8.3

## 8-CHANNEL DMX SPLITTER / BOOSTER

### 5-PIN OR 3-PIN

The Cameo CLSB85/CLSB83 is a professional splitter and booster for configuring DMX networks, than can be connected either directly to a DMX console or to DMX devices. The 19" unit (1U) amplifies the DMX input signal and distributes it to 8 electrically isolated outputs on the back; bright LEDs show the DMX and power status of the channels on the front panel. The input and the THRU socket for looping of the signal are duplicated on the front and back of the CLSB85/CLSB83 and connected in parallel. A switchable 120 Ohm terminating resistor on the DMX THRU output and the power switch complete the equipment; the IEC cable is supplied. For convenient output connector access and reverse installation the rack-mount angles can be attached to the rear of the chassis.

Model Name:	CLSB85	CLSB83
Product Type:	DMX 512 protocol	DMX 512 protocol
DMX Inputs:	2 (parallel)	2 (parallel)
DMX Input Connectors:	5-pin XLR male	3-pin XLR male
DMX Thru Outputs:	2 (parallel)	2 (parallel)
DMX Thru Output Connectors:	5-pin XLR female	3-pin XLR female
DMX Outputs:	8 (electrically isolated)	8 (electrically isolated)
DMX Output Connectors:	5-pin XLR female	3-pin XLR female
Controls:	Power On/Off, DMX Thru Terminator	Power On/Off, DMX Thru Terminator
Indicators:	8 x Power LED, 8 x Signal LED	8 x Power LED, 8 x Signal LED
Power Socket:	IEC Power Socket	IEC Power Socket
Power Supply:	Transformer	Transformer
Operating Voltage:	230 V AC, 50 Hz	230 V AC, 50 Hz
Power Consumption (max.):	15 W	15 W
Housing Material:	Metal	Metal
Housing Colour:	Black	Black
Dimensions (without mounting bracket):	483 x 44 x 160 mm	483 x 44 x 160 mm
Accessories included in Package:	power cord	power cord





# CONTROL 6

## 6 CHANNEL DMX CONTROLLER

The Cameo CLCONTROL6 is an especially compact DMX controller with 6 channels that is perfect for controlling small lighting systems. It can be mounted in many ways and of course can also be used as a freestanding unit; it is extremely easy to operate. The CLCONTROL6 has 6 smoothly shifting faders for the individual DMX channels and a master fader. It can be powered using the included external power adapter or battery and thus is universally useable for manual control of DMX systems. A 3-pin XLR socket is used as the DMX output; a red LED serves as a power indicator. This straightforward lightweight impresses with clear functionality and high user friendliness.

Model Name:	CLCONTROL6
Product:	DMX Mixer
Type:	DMX 512 Protocol
Number of DMX Channels:	6
DMX output	3-pin XLR female
Controls:	6 x Channel Faders, Master Fader
Indicators:	Power LED
Power Supply:	External Power Adapter, 9 V Block Battery
Operating Volatge:	9 - 12 V DC
Dimensions:	165 x 56 x 131 mm
Accessories (included):	AC Adapter, 9 V Block Battery

- ▶ Universal 6-channel DMX controller
- ▶ Battery operation possible
- ▶ External power supply included
- ▶ Rugged metal housing



## MULTI PAR FOOT + 4-SWITCH FOOT PEDAL FOR ALL CLMPAR LIGHT SETS

The Cameo CLMPARFOOTPLUS universal Multi PAR 4-switch foot pedal gives you optimum control of all Cameo LED lighting system CLMPAR3 functions - even without connection to a DMX controller. All the functions can be activated via four solid, non-slip foot switches. Three LEDs are integrated in the compact, solid housing of the Cameo Multi PAR 4-switch foot pedal for visual control of all the functions (mode up, mode down, blackout, sound active, program, colours, full on).

The device is connected via a ten-metre, five-pin XLR cable, supplied with the device and is compatible to the following devices: CLMPAR1, CLMPAR2, CLMPAR3 and CLMPACOB1.

- ▶ Easy on stage control for CLMPAR1, CLMPAR2, CLMPAR3 & CLMPARCOB1
- ▶ Functions: black out, full on, sound control, static colours, light 1/2, auto run
- ▶ Rugged metal housing
- ▶ 10 m 5-pin XLR connection cable included

Model Name:	CLMPARFOOTPLUS
Product:	Foot Switch
Controls:	Mode, Up, Down, Blackout, Microphone Sensitivity, CD/USB/SD
Indicators:	Program Selection, Static Colour, Sound Control
Connectors:	5-pin XLR male
Dimensions:	291 x 65 x 103 mm
Features:	10 m 5-pin XLR Cable included





**LED Technology**

LEDs are extremely advantageous for the use in lighting systems: they are bright, emit very little heat, have a very long lifetime and low energy consumption. Also, LED fixtures often weigh less than conventional devices.



**Eco-Friendly**

With highly efficient energy use, a very long LED lifetime and low heat emission this device is environmentally friendly.



**DMX512**

Created in 1986, DMX512 is a communications standard for lighting equipment. Up to 32 DMX devices can be daisy-chained and controlled by a dedicated source, e.g. a lighting console. In a DMX512 daisy chain “network”, the controller is called “master” while the daisy-chained devices are the “slaves.”



**“Master” and “Slave”**

Simply put, this device is able to control or be controlled by other devices. In “master” mode and first in a chain, the device acts as a controller for devices (“slaves”) that are connected to its output. In “slave” mode, the input of the device is connected to the output of a lighting console or “master.” Devices that are daisy-chained to a slave’s output also act as slaves.



**Sound Control**

In “sound to light” mode, the device is controlled by a built-in microphone capturing sounds to activate colour changes, e.g. the beat of the music.



**Standalone Mode**

In “standalone” mode, this device uses built-in programs to control its functions. There is no need for a lighting console or “master” controller.



**RGB additive Colour System**

Additive colour mixes varying amounts of red, green and blue to produce other colours and white. The RGB system is used in television, computer monitors and digital cameras to name a few.



**RGB additive Colour System plus amber LEDs**

Amber is a pure colour outside the RGB spectrum. Adding amber LEDs to the RGB system produces deeper, warmer, more saturated colours.



**RGB additive Colour System plus white LEDs**

Adding white LEDs to the RGB system produces more contrast and definition and enhances the RGB generated white and pastel colours.



**RGBWA**

RGB additive Colour System plus white and amber LEDs.



**Strobe Lighting**

Strobe lights emit a large number of periodic flashes per second seemingly freezing the movement of objects thus creating the illusion of slow motion.



**Single Pixel Control**

This device features single pixel control. With individual LED pixel on/off status and colour control this fixture is capable of creating animated patterns and video panel style pixel mapping effects.

ICON **LEGEND**



**COB LED Technology**

The “chip-on-board” multi-LED array is a recent technology that produces a high-density large-area light source with high brightness and uniform diffusion for a rich wash of colours.



**Tri-Colour RGB LEDs**

Also called 3-in-1, RGB LEDs have red, green and blue emitters in a single LED. They are capable of producing the RGB additive colour spectrum and white.



**Quad-Colour RGBA/RGBW LEDs**

Also called 4-in-1, quad-colour LEDs add amber to the RGB spectrum for increased saturation, or white for improved contrast and definition.



**5in1 LED**

Add amber and white to the RGB spectrum for increased saturation, and white for improved contrast and definition.



**6in1 LED**

Add amber, white and UV to the RGB spectrum for increased saturation, and white for improved contrast and definition. UV is a nice feature as an alternative to classic black lights.



**Ingress Protection Rating of 65**

The IP code rates the degree of protection against the intrusion of solid objects, water and access to hazardous parts. This device is completely protected against hazardous contact, water jets and ingress of dust.



**Laser Light**

Due to its remarkable directional quality laser light maintains brightness and visibility over long distances. Producing tightly focused, narrow beams that are perfect for impressive lighting effects laser sources are extremely energy-efficient.



**UV**

UV or Black lights are employed for decorative and artistic lighting effects.



**Infrared Remote Control**

Featuring an IR sensor the device can be controlled via the included handheld wireless IR remote control.



**Cold White**

Referring to colour temperature measured in Kelvin (K) “cold white” provides a very bright, clean light in the 5,000 - 10,000 K range with a somewhat artificial touch that goes well with deeply saturated primary colours.



**Warm White**

Referring to colour temperature measured in Kelvin (K) “warm white” is in the 2,000 - 4,000 K range providing a soft light with a slight touch of yellow that is natural and pleasing to the eye.



**RDM enabled**

This fixture is RDM enabled. The Remote Device Management protocol extension to DMX allows bi-directional communication over a standard DMX network for the convenient configuration, management and monitoring of RDM devices connected to a dedicated RDM controller.



**Unlimited Rotation**

This moving head fixture features two high speed high torque motors for infinite horizontal and vertical rotation (pan and tilt).

# smart, slim & sophisticated.



**MAUI 28 & MAUI 28 MIX**  
IN BLACK  
1600 W PEAK

**MAUI 11 MIX**  
IN BLACK  
1200 W PEAK

**MAUI 44**  
IN BLACK  
1600 W RMS / 3200 W PEAK

**MAUI 11 MIX**  
IN WHITE  
1200 W PEAK

**MAUI 28**  
IN WHITE  
1600 W PEAK

**MAUI 5**  
IN BLACK  
800 W PEAK

**LD SYSTEMS** PRO AUDIO  
IN MOTION

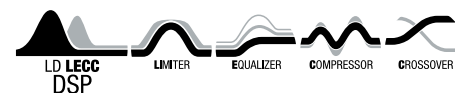
## MAUI® SERIES

ACTIVE COMPACT  
COLUMN **PA-SYSTEMS**

- ✓ Design PA systems for musicians, DJs, conferences and AV
- ✓ Multi-amped subwoofer powering the array speaker column
- ✓ Ultra wide 120° horizontal dispersion
- ✓ Extended vertical directivity with reduced level drop
- ✓ All-in-one PA and monitoring thanks to high feedback resistance
- ✓ Ultra fast cableless setup
- ✓ For portable use and unobtrusive installation
- ✓ MAUI 44 : 3200 W (peak) / 1600 W (RMS) / Class D amplification incl. DSP
- ✓ MAUI 28 : 1600 W (peak) / Class A/B amplification
- ✓ MAUI 11 MIX : 1200 W (peak) / Class D amplification incl. DSP
- ✓ MAUI 5: 800 W (peak) / Class D amplification incl. DSP
- ✓ MAUI 5, 28 & 11 MIX: Features an additional integrated 3-channel mixer

FIND YOUR DEALER:  
[WWW.LD-SYSTEMS.COM](http://WWW.LD-SYSTEMS.COM)

   [www.facebook.com/ldsystems](http://www.facebook.com/ldsystems)  
[www.youtube.com/ldsystems/videos](http://www.youtube.com/ldsystems/videos)  
[blog.adamhall.com](http://blog.adamhall.com)  
LD Systems® is a registered brand of the Adam Hall Group.







# PRODUCT CATALOGUE 2015

The information contained in this publication, including numerical data, has been prepared as a general guide to the products, but intending buyers and users must satisfy themselves as to the suitability and the safety of the products for their particular purposes and duties. No responsibility is assumed for any errors herein. The company reserves the right to alter the designs and material specifications of products shown in this publication without notice.

[www.cameolight.com](http://www.cameolight.com)  
Cameo® is a brand of the Adam Hall Group.



[www.facebook.com/cameolightandsound](http://www.facebook.com/cameolightandsound)  
[www.youtube.com/cameolightandsound](http://www.youtube.com/cameolightandsound)  
[blog.adamhall.com](http://blog.adamhall.com)

YOUR **CAMEO**® DEALER:

--